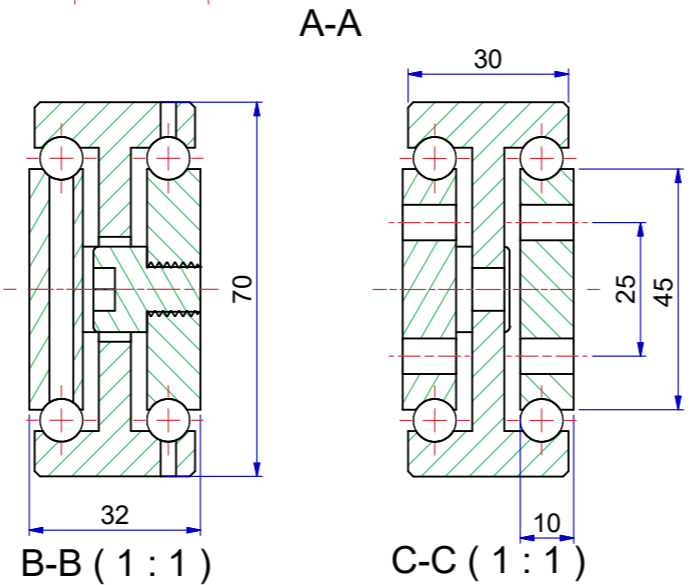
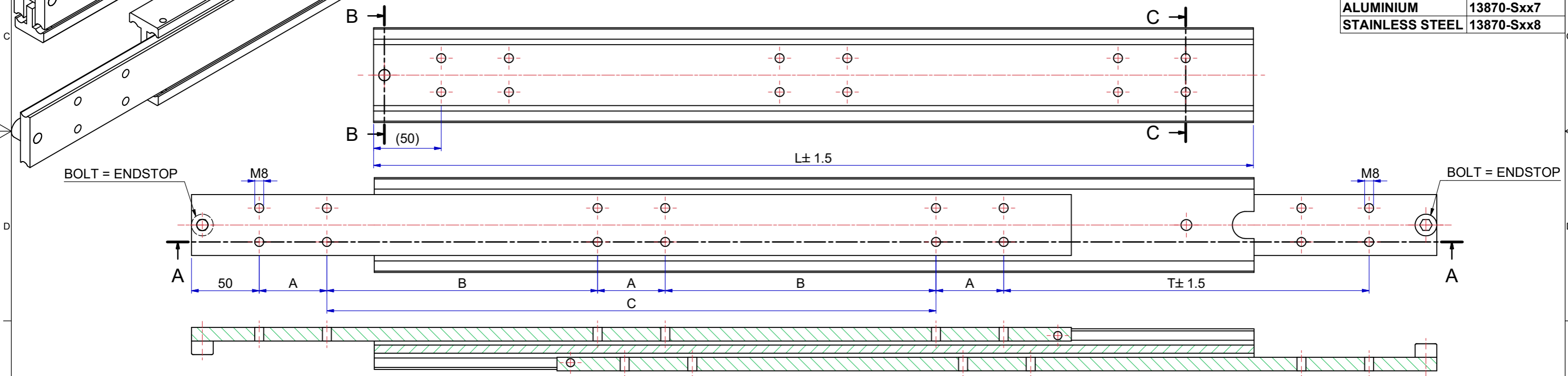


Slide number	Installation length L (mm)	Travel T (mm)	Load per pair (kg) steel	Load per pair (kg) aluminum	Load per pair (kg) stainless steel	Dimension A	Dimension B	Dimension C
13870S01	200	200	540	240	420	50	-	-
13870S02	250	250	560	250	430	50	-	50
13870S03	300	300	580	260	440	50	-	100
13870S04	350	350	600	270	450	50	-	150
13870S05	400	400	620	280	460	50	-	200
13870S06	450	450	640	290	470	50	-	250
13870S07	500	500	650	300	480	50	-	300
13870S08	550	550	660	315	490	50	-	350
13870S09	600	600	670	330	500	50	-	400
13870S10	650	650	680	320	510	50	200	-
13870S11	700	700	690	310	520	50	225	-
13870S12	750	750	695	300	530	50	250	-
13870S13	800	800	700	290	540	50	275	-
13870S14	850	850	695	280	526	50	300	-
13870S15	900	900	690	270	512	50	325	-
13870S16	950	950	685	260	490	50	350	-
13870S17	1000	1000	680	250	476	50	375	-
13870S18	1050	1050	660	240	462	50	400	-
13870S19	1100	1100	650	230	455	50	425	-
13870S20	1150	1150	630	220	441	50	450	-
13870S21	1200	1200	610	210	427	50	475	-

MATERIAL	ITEM NUMBER
STEEL	13870-Sxx
ALUMINIUM	13870-Sxx7
STAINLESS STEEL	13870-Sxx8



The load capacities are based on a 1% deflection test based on a simulation model (Finite Element Analysis)
 Load capacity in practice always depends on mounting use and other external factors that can influence this.
 Tolerance ±0,5mm measured from reference point.

Designer M.Urlings	Gen.Tol.Dim. ± 0.5	Third angle projection	Material	
Date 18-7-2018	Gen.Tol.Angle ± 0.5		Treatment	
Approver	Gen.Roughness Ra		Draw type Fabrication	Doc.No. E000149134
Date	Units mm/deg.		Scale 1 : 2	Type
Description SUPREME TR7032 - (32)				
Format A2	THOMAS REGOUT INTERNATIONAL B.V.		Item No. 13870-Sxx	Released for Production
© THOMAS REGOUT INTERNATIONAL BV, Industrieweg 40, 6219 NR, Maastricht, The Netherlands, +31 (0)43 351 66 66			Revision 01	All rights are reserved.

Rev	Date	Description	Designer
01	12-6-2023	REVISED MODEL AND TABLE.	R.G