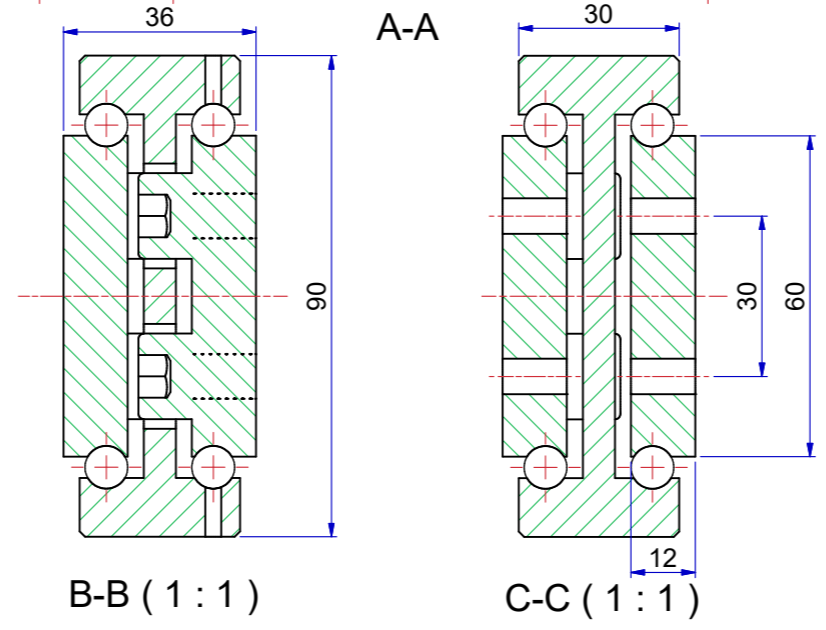
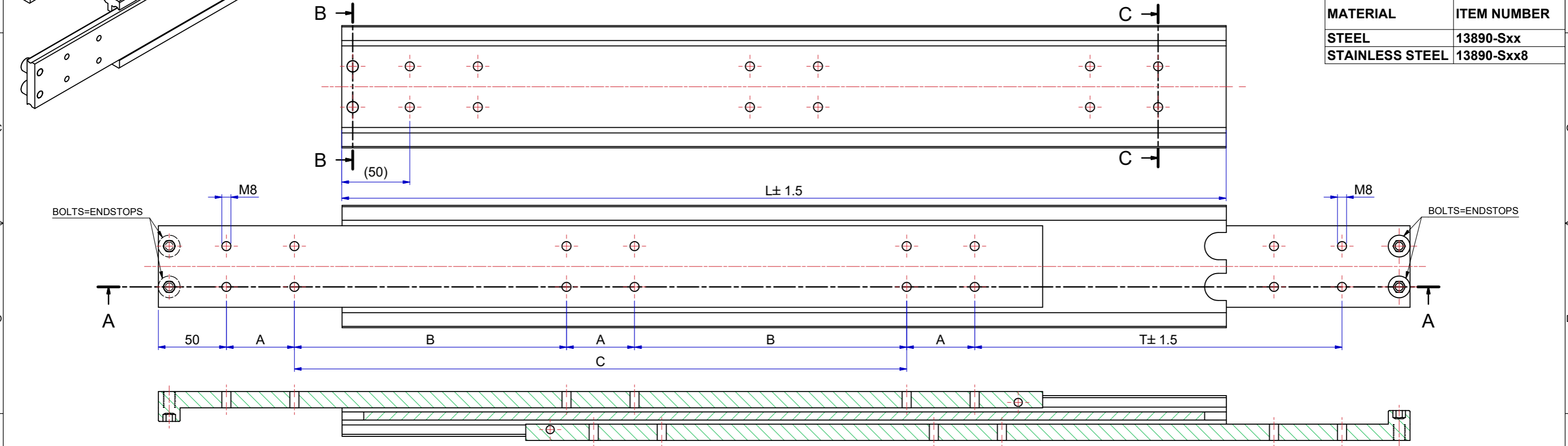


Slide number	Installation length L (mm)	Travel T (mm)	Load per pair (kg) steel	Load per pair (kg) stainless steel	Dimension A	Dimension B	Dimension C
13890S03	300	300	780	546	50	-	100
13890S04	350	350	830	581	50	-	150
13890S05	400	400	860	602	50	-	200
13890S06	450	450	890	623	50	-	250
13890S07	500	500	940	658	50	-	300
13890S08	550	550	960	672	50	-	350
13890S09	600	600	980	686	50	-	400
13890S10	650	650	1000	700	50	200	-
13890S11	700	700	1030	721	50	225	-
13890S12	750	750	1040	728	50	250	-
13890S13	800	800	1050	735	50	275	-
13890S14	850	850	1045	731	50	300	-
13890S15	900	900	1030	721	50	325	-
13890S16	950	950	1015	710	50	350	-
13890S17	1000	1000	995	696	50	375	-
13890S18	1050	1050	980	686	50	400	-
13890S19	1100	1100	950	665	50	425	-
13890S20	1150	1150	920	644	50	450	-
13890S21	1200	1200	900	630	50	475	-

MATERIAL	ITEM NUMBER
STEEL	13890-Sxx
STAINLESS STEEL	13890-Sxx8



The load capacities are based on a 1% deflection test based on a simulation model (Finite Element Analysis)
 Load capacity in practice always depends on mounting use and other external factors that can influence this.
 Tolerance ± 0.5 mm measured from reference point.

Designer M. Urlings	Gen.Tol.Dim. ± 0.5	Third angle projection	Material	
Date 18-7-2018	Gen.Tol.Angle ± 0.5		Treatment	
Approver	Gen.Roughness Ra		Draw type Fabrication	Doc.No. E000147293
Date	Units mm/deg.		Scale 1 : 2	Type
Description				
SUPREME TR9036 - (36)				
Released for Production				Item No.
Format A2			13890-Sxx	Revision 01
© THOMAS REGOUT INTERNATIONAL BV, Industrieweg 40, 6219 NR, Maastricht, The Netherlands, +31 (0)43 351 66 66 All rights are reserved.				

Rev	Date	Description	Designer
01	13-6-2023	REVISED MODEL AND TABLE.	R.G