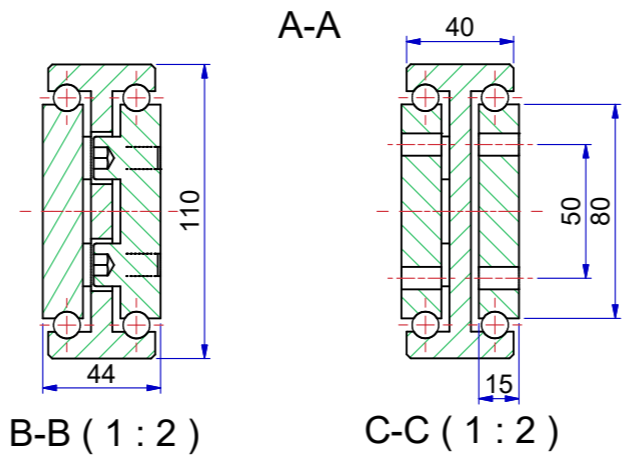
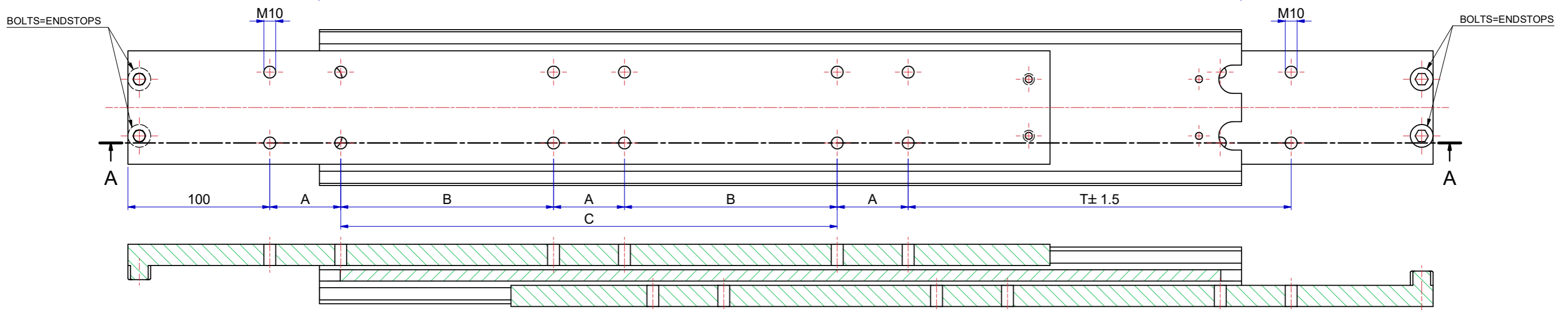
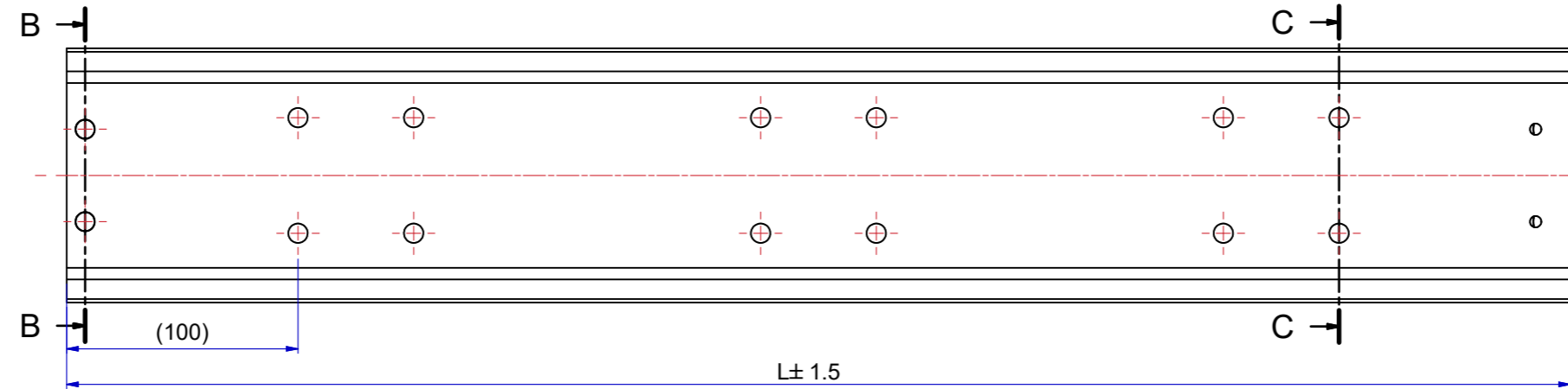


Slide number	Installation length L (mm)	Travel T (mm)	Load per pair (kg) steel	Dimension A	Dimension B	Dimension C
138110S03	300	300	1430	100	-	-
138110S04	350	350	1485	50	-	50
138110S05	400	400	1540	50	-	100
138110S06	450	450	1600	50	-	150
138110S07	500	500	1650	50	-	200
138110S08	550	550	1700	50	-	250
138110S09	600	600	1740	50	-	300
138110S10	650	650	1780	50	150	-
138110S11	700	700	1800	50	175	-
138110S12	750	750	1780	50	200	-
138110S13	800	800	1760	100	150	-
138110S14	850	850	1730	100	175	-
138110S15	900	900	1690	100	200	-
138110S16	950	950	1660	100	225	-
138110S17	1000	1000	1630	100	250	-
138110S18	1050	1050	1600	100	275	-
138110S19	1100	1100	1560	100	300	-
138110S20	1150	1150	1530	100	325	-
138110S21	1200	1200	1500	100	350	-



The load capacities are based on a 1% deflection test based on a simulation model (Finite Element Analysis)
 Load capacity in practice always depends on mounting use and other external factors that can influence this.
 Tolerance ±0,5mm measured from reference point.

Designer	M.Urlings	Gen.Tol.Dim.	± 0.5	Third angle projection	Material		
Date	18-7-2018	Gen.Tol.Angle	± 0.5		Treatment		
Approver		Gen.Roughness	Ra		Draw type	Fabrication	
Date		Units	mm/deg.		Scale	1 : 2	Doc.No.
Description				Model No.			
SUPREME TR11044 - (44)				Released for Production			
Format	A2	THOMAS REGOUT INTERNATIONAL B.V.		Item No.	138110-Sxx	Revision	01
© THOMAS REGOUT INTERNATIONAL BV, Industrieweg 40, 6219 NR, Maastricht, The Netherlands, +31 (0)43 351 66 66 All rights are reserved.							

Rev	Date	Description	Designer
01	15-6-2023	REVISED MODEL AND TABLE.	R.G