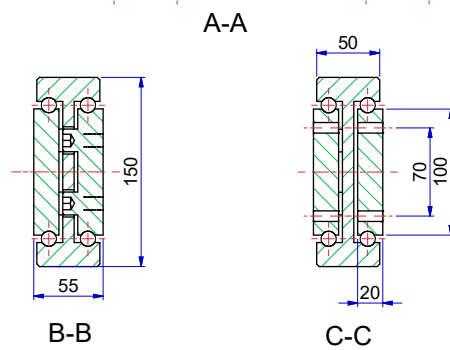
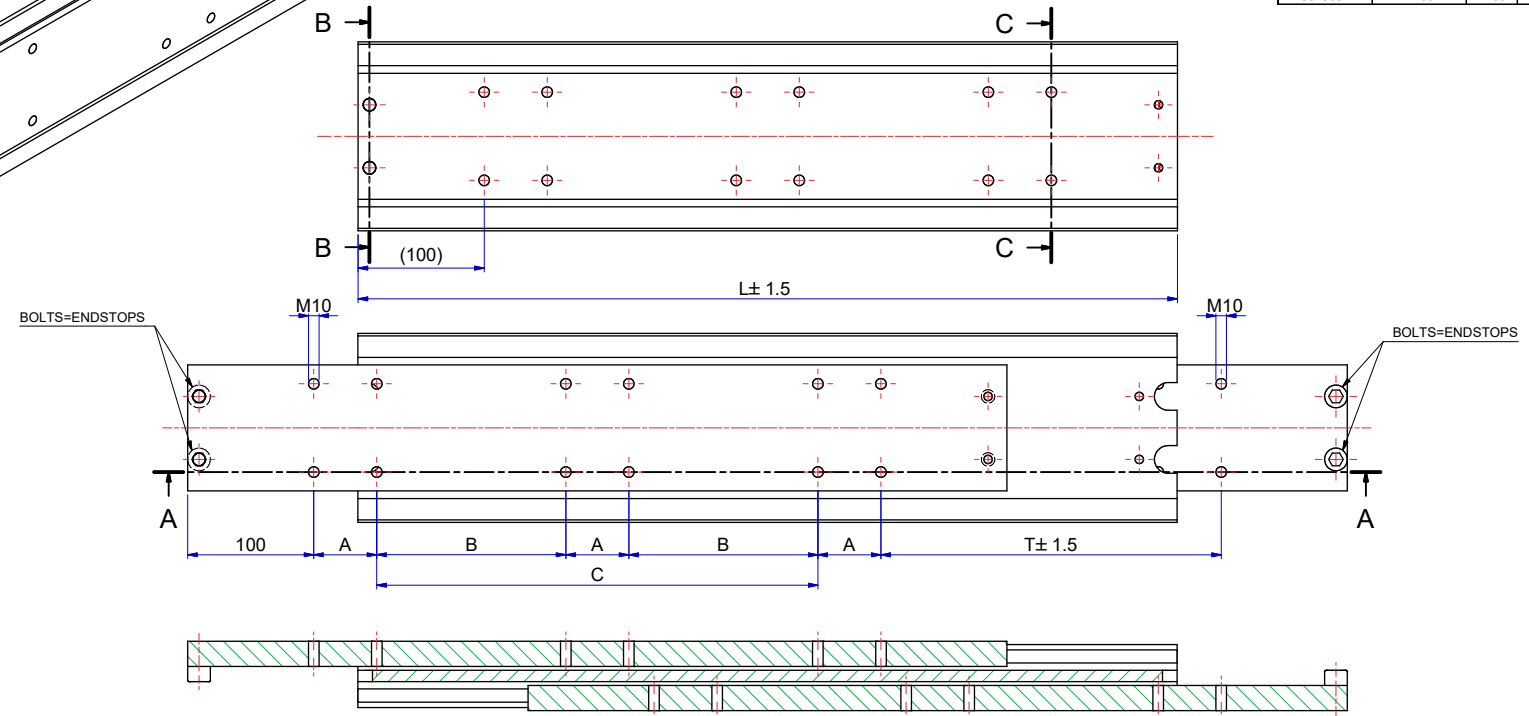


Slide number	Installation length L (mm)	Travel T (mm)	Load per pair (kg) steel	Dimension A	Dimension B	Dimension C
138150503	300	300	1720	100	-	-
138150504	350	350	1790	50	-	50
138150505	400	400	1860	50	-	100
138150506	450	450	1930	50	-	150
138150507	500	500	2020	50	-	200
138150508	550	550	2100	50	-	250
138150509	600	600	2180	50	-	300
138150510	650	650	2250	50	150	-
138150511	700	700	2300	50	175	-
138150512	750	750	2340	50	200	-
138150513	800	800	2380	100	150	-
138150514	850	850	2410	100	175	-
138150515	900	900	2370	100	200	-
138150516	950	950	2330	100	225	-
138150517	1000	1000	2300	100	250	-
138150518	1050	1050	2270	100	275	-
138150519	1100	1100	2240	100	300	-
138150520	1150	1150	2210	100	325	-
138150521	1200	1200	2180	100	350	-



The load capacities are based on a 1% deflection test based on a simulation model (Finite Element Analysis)  
 Load capacity in practice always depends on mounting use and other external factors that can influence this.  
 Tolerance ±0.5mm measured from reference point.

Designer	M.Urlings	Gen.Tol.Dim.	± 0,5	Third angle projection	Material			
Date	18-7-2018	Gen.Tol.Angle	± 0,5		Treatment			
Approver		Gen.Roughness	Ra		Draw type	Fabrication	Doc.No.	E000149182
Date		Units	mm/deg.		Scale	1 : 3	Type	
Description								
<b>SUPREME TR15055 - (55)</b>								
Format							Released for Production	
A2						Item No.		Revision
						138150-Sxx		01
© THOMAS REGOUT INTERNATIONAL BV, Industrieweg 40, 6219 NR, Maastricht, The Netherlands, +31 (0)43 351 66 66 All rights are reserved.								

Rev	Date	Description	Designer
01	16-6-2023	REVISED MODEL AND TABLE.	R.G