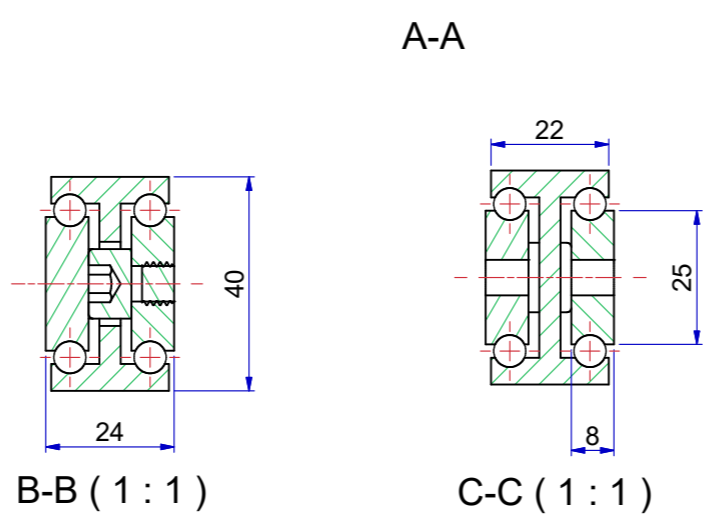
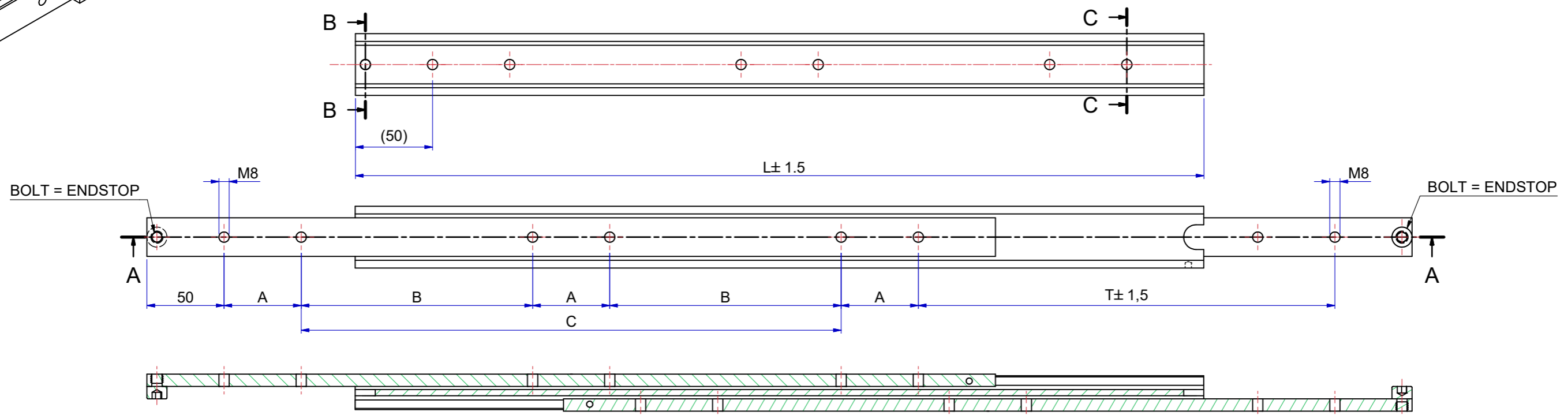


Slide number	Installation length L (mm)	Travel T (mm)	Load per pair (kg) steel	Load per pair (kg) aluminum	Load per pair (kg) stainless steel	Dimension A	Dimension B	Dimension C
13840S01	200	200	270	85	189	50	-	-
13840S02	250	250	280	90	196	50	-	50
13840S03	300	300	290	95	203	50	-	100
13840S04	350	350	300	100	210	50	-	150
13840S05	400	400	310	105	217	50	-	200
13840S06	450	450	320	110	224	50	-	250
13840S07	500	500	330	115	231	50	-	300
13840S08	550	550	350	120	245	50	150	-
13840S09	600	600	340	125	238	50	175	-
13840S10	650	650	320	120	224	50	200	-
13840S11	700	700	300	115	210	50	225	-
13840S12	750	750	290	110	203	50	250	-
13840S13	800	800	280	105	196	50	275	-
13840S14	850	850	270	100	189	50	300	-
13840S15	900	900	250	95	175	50	325	-
13840S16	950	950	230	90	161	50	350	-
13840S17	1000	1000	220	85	154	50	375	-
13840S18	1050	1050	210	80	147	50	400	-
13840S19	1100	1100	200	75	140	50	425	-
13840S20	1150	1150	190	70	133	50	450	-
13840S21	1200	1200	180	65	126	50	475	-

MATERIAL	ITEM NUMBER
STEEL	13840-Sxx
ALUMINIUM	13840-Sxx7
STAINLESS STEEL	13840-Sxx8



The load capacities are based on a 1% deflection test based on a simulation model (Finite Element Analysis)  
 Load capacity in practice always depends on mounting use and other external factors that can influence this.  
 Tolerance ±0,5mm measured from reference point.

Designer M.Urlings	Gen.Tol.Dim. ± 0,5	Third angle projection	Material	
Date 18-7-2018	Gen.Tol.Angle ± 0,5		Treatment	
Approver	Gen.Roughness Ra		Draw type Fabrication	Doc.No. E000147025
Date	Units mm/deg.		Scale 1 : 2	Type
Description <b>SUPREME TR4024 -(24)</b>				
Format A2			Item No. 13840-Sxx	Released for Production
© THOMAS REGOUT INTERNATIONAL BV, Industrieweg 40, 6219 NR, Maastricht, The Netherlands, +31 (0)43 351 66 66		All rights are reserved.		

Rev	Date	Description	Designer
01	02-06-2023	REVISED MODEL AND TABLE.	R.G