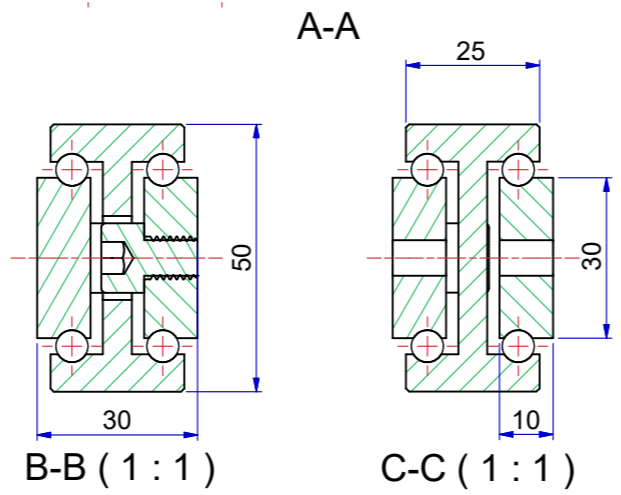
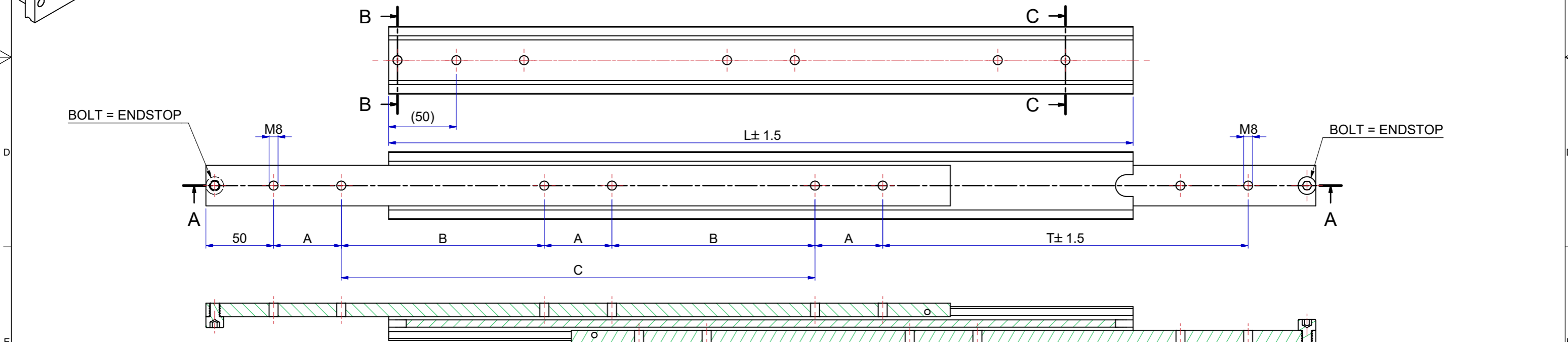


Slide number	Installation length L (mm)	Travel T (mm)	Load per pair (kg) steel	Load per pair (kg) aluminum	Load per pair (kg) stainless steel	Dimension A	Dimension B	Dimension C
13850S01	200	200	340	110	238	50	-	-
13850S02	250	250	350	120	245	50	-	50
13850S03	300	300	360	130	252	50	-	100
13850S04	350	350	370	140	259	50	-	150
13850S05	400	400	380	150	266	50	-	200
13850S06	450	450	390	160	273	50	-	250
13850S07	500	500	400	170	280	50	-	300
13850S08	550	550	410	180	287	50	150	-
13850S09	600	600	420	175	294	50	175	-
13850S10	650	650	410	170	287	50	200	-
13850S11	700	700	400	165	280	50	225	-
13850S12	750	750	390	160	273	50	250	-
13850S13	800	800	380	155	266	50	275	-
13850S14	850	850	370	150	259	50	300	-
13850S15	900	900	360	145	252	50	325	-
13850S16	950	950	350	140	245	50	350	-
13850S17	1000	1000	340	135	238	50	375	-
13850S18	1050	1050	330	130	231	50	400	-
13850S19	1100	1100	320	125	224	50	425	-
13850S20	1150	1150	310	120	217	50	450	-
13850S21	1200	1200	290	115	203	50	475	-

MATERIAL	ITEM NUMBER
STEEL	13850-Sxx
ALUMINIUM	13850-Sxx7
STAINLESS STEEL	13850-Sxx8



The load capacities are based on a 1% deflection test based on a simulation model (Finite Element Analysis)
 Load capacity in practice always depends on mounting use and other external factors that can influence this.
 Tolerance ±0,5mm measured from reference point.

Designer M. Urlings	Gen.Tol.Dim. ± 0.5	Third angle projection	Material	
Date 18-7-2018	Gen.Tol.Angle ± 0.5		Treatment	
Approver	Gen.Roughness Ra		Draw type Fabrication	Doc.No. E000147503
Date	Units mm/deg.		Scale 1 : 2	Type
Description SUPREME TR5030 - (30)				
Format A2			Item No. 13850-Sxx	Released for Production
© THOMAS REGOUT INTERNATIONAL BV, Industrieweg 40, 6219 NR, Maastricht, The Netherlands, +31 (0)43 351 66 66		All rights are reserved.		

Rev	Date	Description	Designer
01	02-06-2023	REVISED MODEL AND TABLE.	R.G