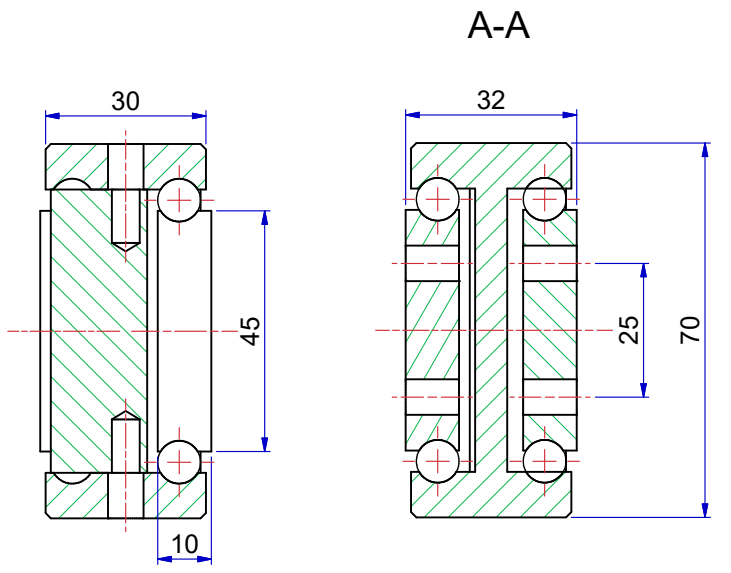
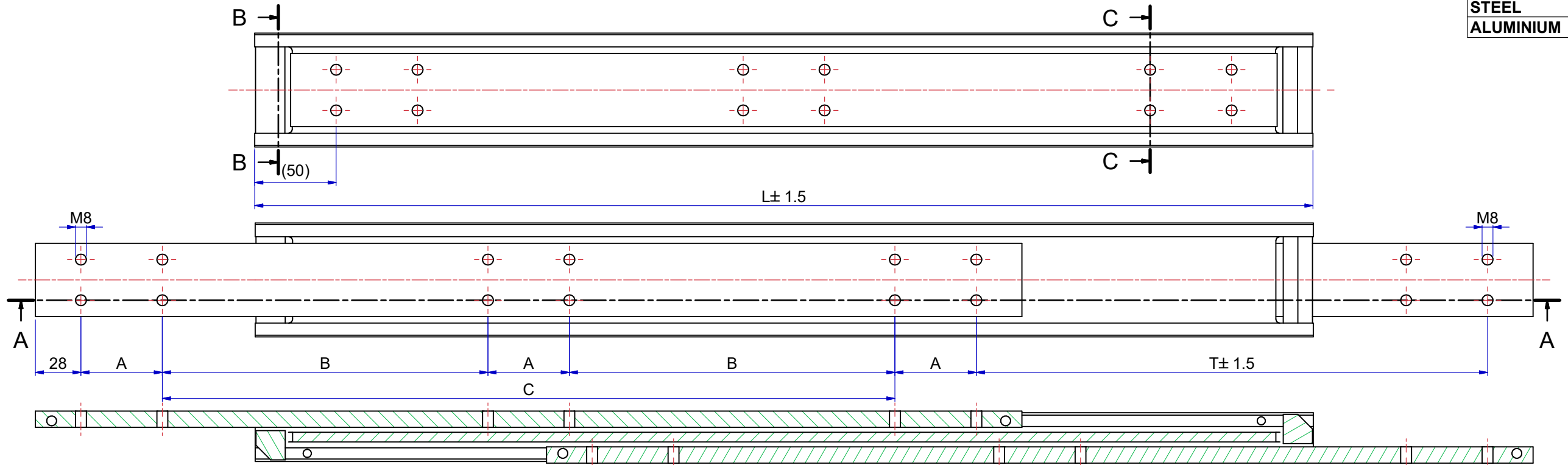


Slide number	Installation length L (mm)	Travel T (mm)	Load per pair (kg) steel	Load per pair (kg) aluminum	Dimension A	Dimension B	Dimension C
13870S01B	200	200	540	240	50	-	-
13870S02B	250	250	560	250	50	-	50
13870S03B	300	300	580	260	50	-	100
13870S04B	350	350	600	270	50	-	150
13870S05B	400	400	620	280	50	-	200
13870S06B	450	450	640	290	50	-	250
13870S07B	500	500	650	300	50	-	300
13870S08B	550	550	660	315	50	-	350
13870S09B	600	600	670	330	50	-	400
13870S10B	650	650	680	320	50	200	-
13870S11B	700	700	690	310	50	225	-
13870S12B	750	750	695	300	50	250	-
13870S13B	800	800	700	290	50	275	-
13870S14B	850	850	695	280	50	300	-
13870S15B	900	900	690	270	50	325	-
13870S16B	950	950	685	260	50	350	-
13870S17B	1000	1000	680	250	50	375	-
13870S18B	1050	1050	660	240	50	400	-
13870S19B	1100	1100	650	230	50	425	-
13870S20B	1150	1150	630	220	50	450	-
13870S21B	1200	1200	610	210	50	475	-

MATERIAL	ITEM NUMBER
STEEL	13870-SxxB
ALUMINIUM	13870-Sxx7B



The load capacities are based on a 1% deflection test based on a simulation model (Finite Element Analysis) Load capacity in practice always depends on mounting use and other external factors that can influence this.  
Tolerance ± 0,5mm measured from reference point.

Designer M. Urlings	Gen.Tol.Dim. ± 0.5	Third angle projection	Material	
Date 19-7-2018	Gen.Tol.Angle ± 0.5		Treatment	
Approver	Gen.Roughness Ra		Draw type Fabrication	Doc.No. E000147358
Date	Units mm/deg.		Scale 1 : 2	Type
Description <b>SUPREME TR7032 - (32) BILEX</b>				
Format A2			Item No. 13870SxxB	Revision 01
© THOMAS REGOUT INTERNATIONAL BV, Industrieweg 40, 6219 NR, Maastricht, The Netherlands, +31 (0)43 351 66 66 All rights are reserved.				

Rev	Date	Description	Designer
1	25-4-2023	REVISED MODEL AND TABLE.	R.G