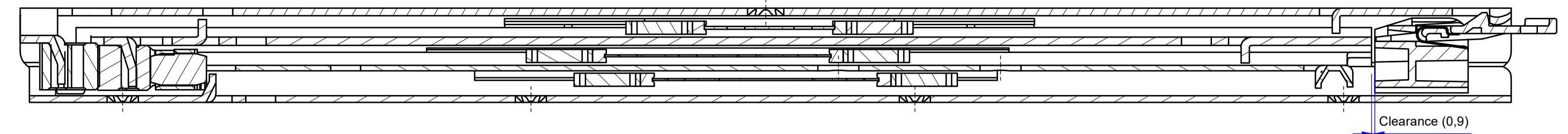
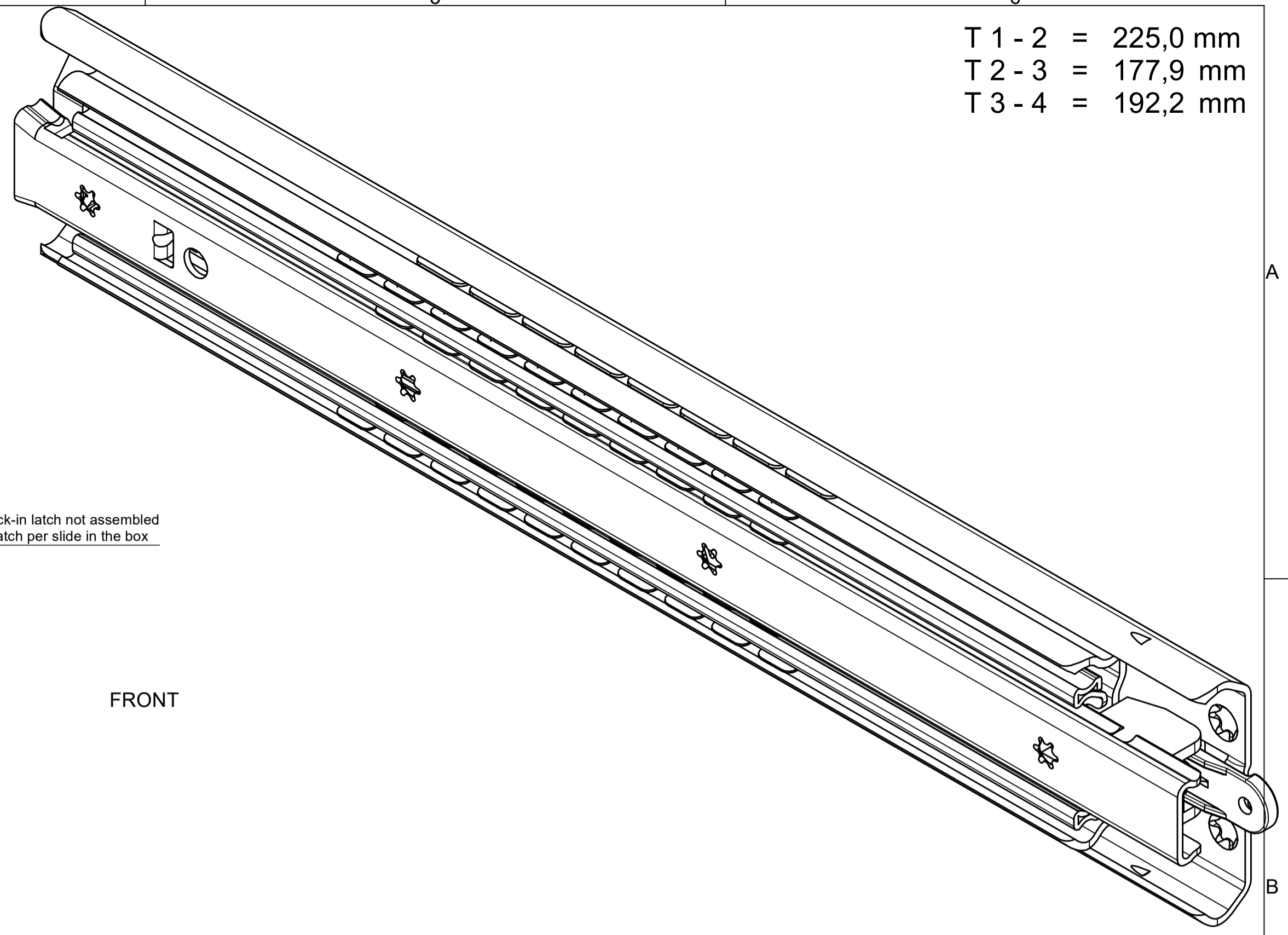


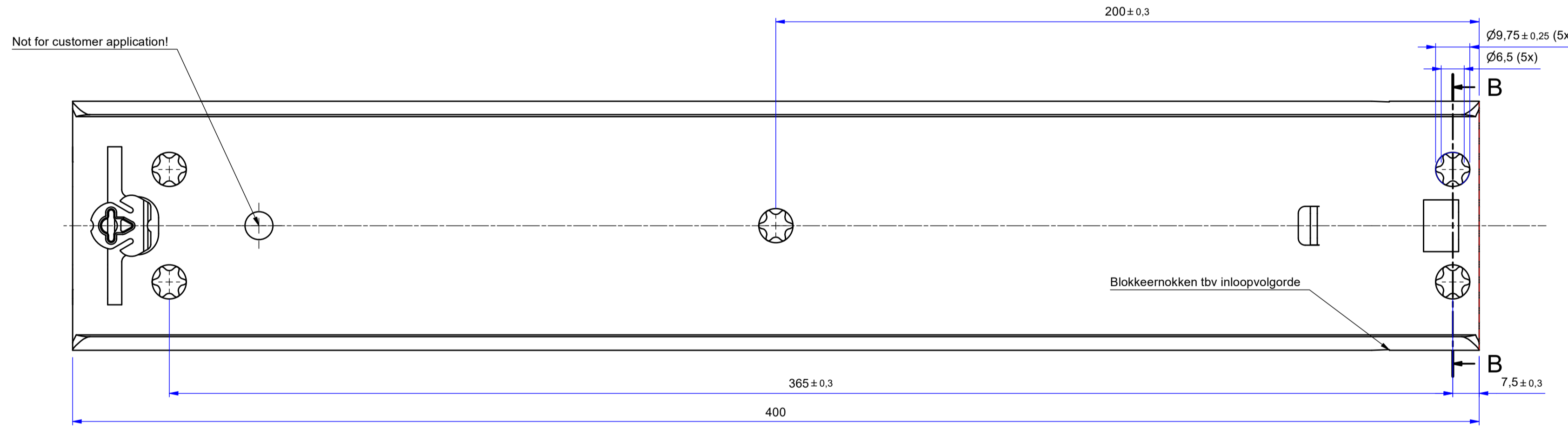
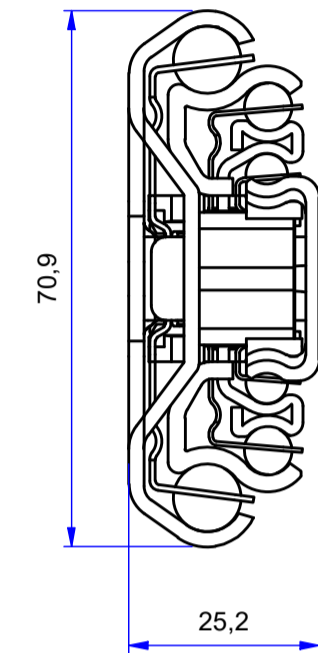
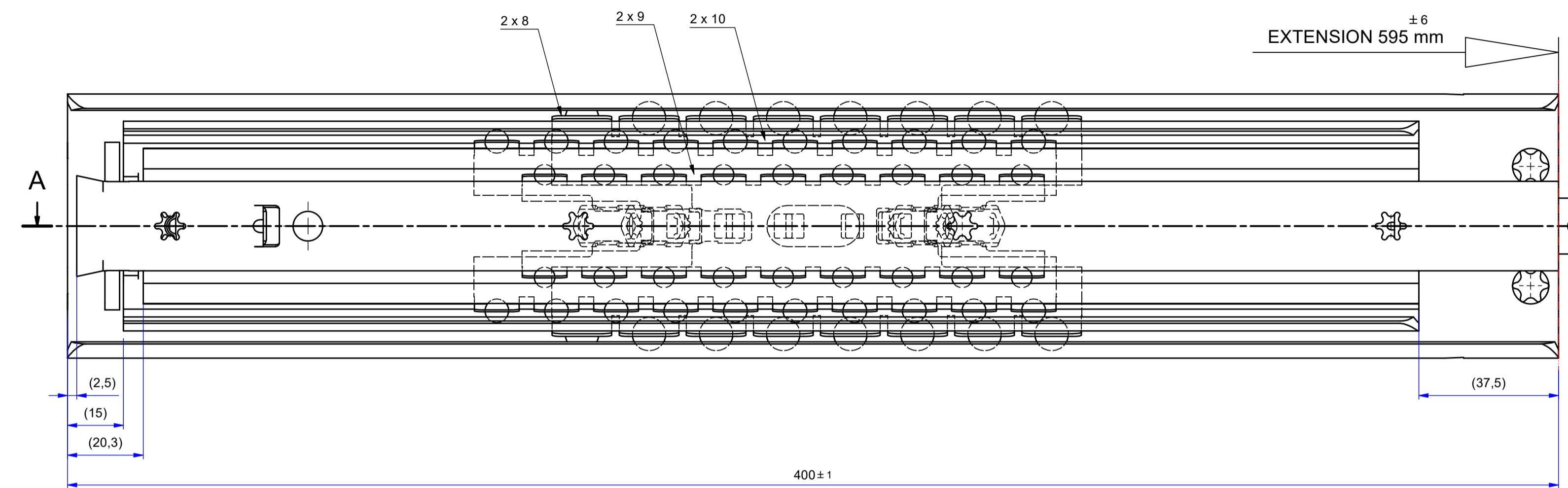
T 1-2 = 225,0 mm
 T 2-3 = 177,9 mm
 T 3-4 = 192,2 mm



A-A (1:1)



FRONT

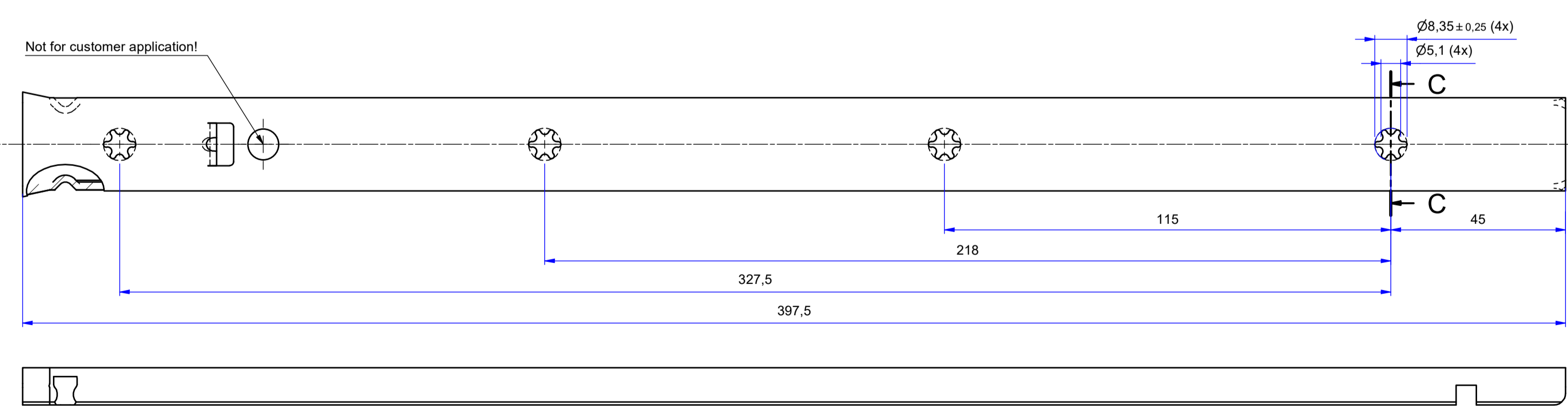


Not for customer application!

Blokkeermokken tbv inloopvolgorde

511-11-M33-TA1

514-11-M33-UB3



Not for customer application!

Released for Production

| | | | |
|---|----------------------------------|------------------------|---------------------------|
| Designer M. Bulte | Gen.Tol.Dim. ± 0,5 | Third angle projection | Material |
| Date 8-3-2007 | Gen.Tol.Angle ± 0,5 | | Treatment |
| Approver | Gen.Roughness Ra | | Draw type Fabrication |
| Date | Units mm/deg. | Scale 1 : 1 | Type Model No. E000146412 |
| Description | | | |
| CONDOR 400.0 / 595.0 (25.1mm) | | | |
| Format A1 | THOMAS REGOUT INTERNATIONAL B.V. | Item No. 111-M33 | Revision 01 |
| © THOMAS REGOUT INTERNATIONAL BV, Industrieweg 40, 6219 NR, Maastricht, The Netherlands, +31 (0)43 351 66 66 All rights are reserved. | | | |

Left hand slide = Left hand slide.

Dimensions between marks are guide dimensions.

Thomas Regout Int. B.V. reserves the right to alter non-customer specific specifications without notice.

| | | | |
|-----|------------|---|------------|
| 01 | 27-03-2023 | Implemented stopping system S111-11-06 and S111-11-07 to profile 511-11-M33-TA1; changed ball bearing from 51570108V49.5 to 51572909V49.5 | M. Meijers |
| Rev | Date | Description | Designer |