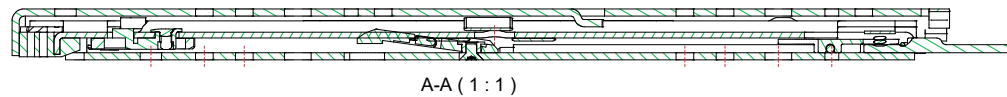
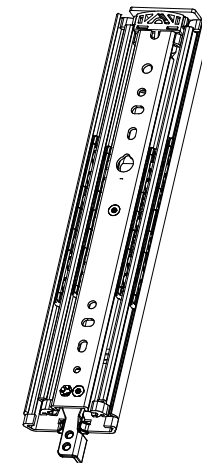
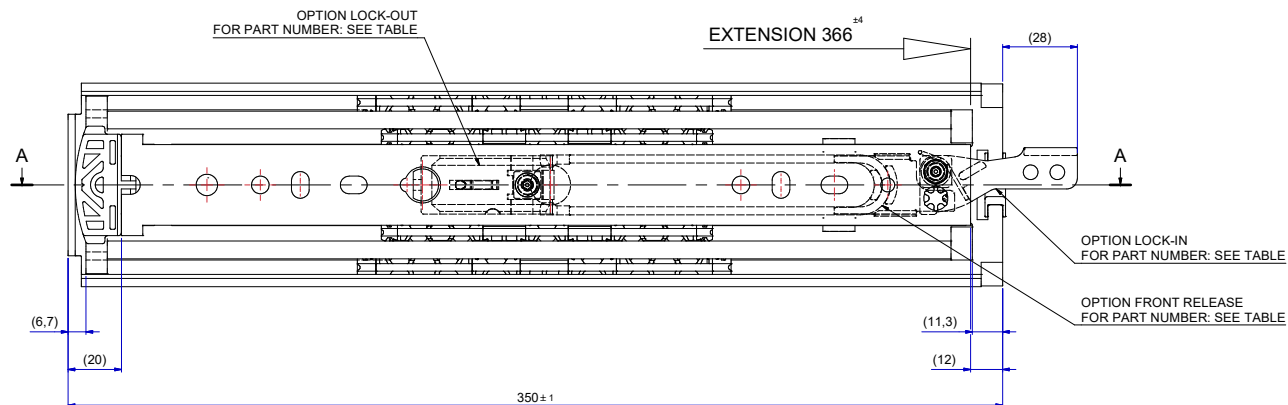
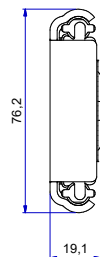


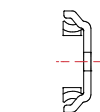
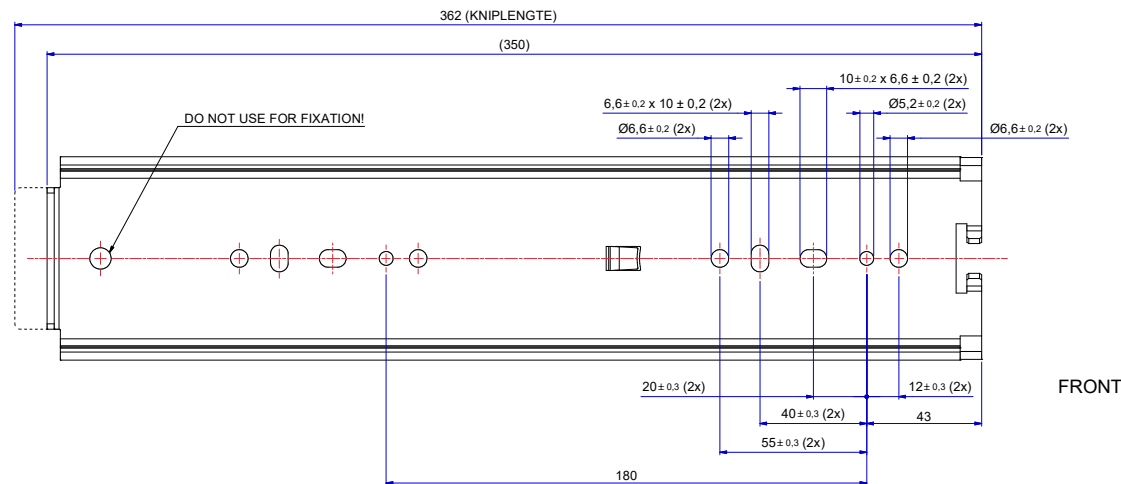
T 1-2 = 187,3
T 2-3 = 178,7



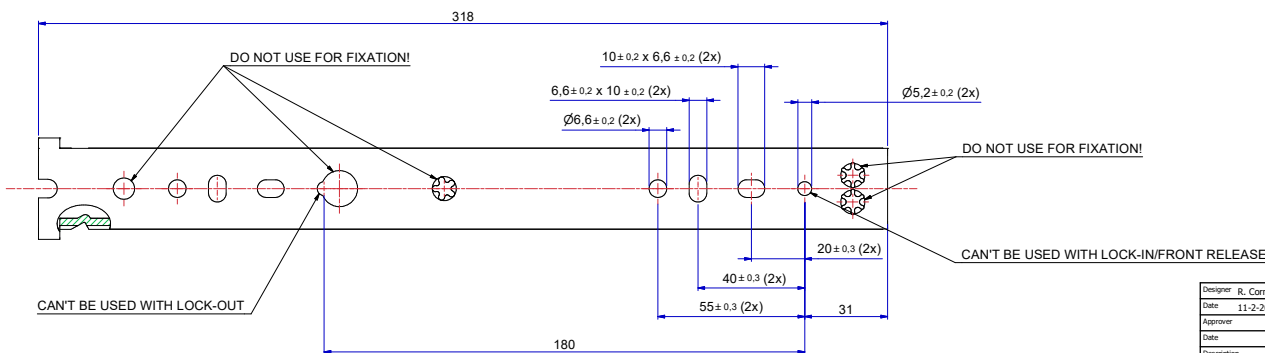
A-A (1:1)



511-14-S32-TC1



513-14-S32-TC3



SLIDE
RIGHT HAND = LEFT HAND
LOCK-IN/FRONT-RELEASE
RIGHT HAND SIDE SHOWN, LEFT HAND SIDE IS MIRRORED

DIMENSIONS BETWEEN MARKS ARE GUIDE DIMENSIONS.
THOMAS REGOUT INT. B.V. RESERVES THE RIGHT TO ALTER
NON-CUSTOMER SPECIFIC SPECIFICATIONS WITHOUT NOTICE.

Designer	R. Cornelissen	Gen.Tol.Dim.	± 0,5	Third angle projection	Material
Date	11-2-2021	Gen.Tol.Angle	± 0,5	Treatment	
Approver		Gen.Roughness	Ra	Draw type	Fabrication
Date		Units	mm/deg.	Scale	1 : 1
Description		TR7619 350 / 366 (19,1mm)		Item No.	114-S32
Format		A1		Released for Production	Revision
STANDARD		114S32		00	
LOCK-IN		114S32A			
LOCK-OUT		114S32B			
LOCK-IN & LOCK-OUT & FRONT-RELEASE		114S32C			