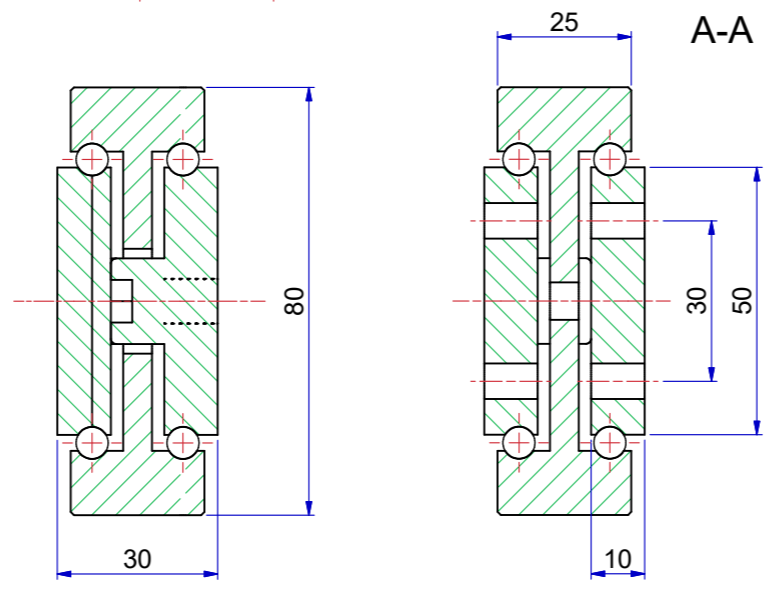
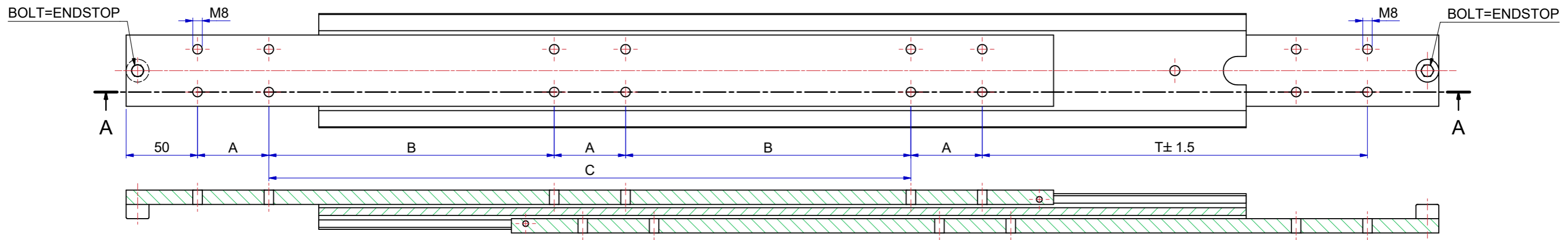
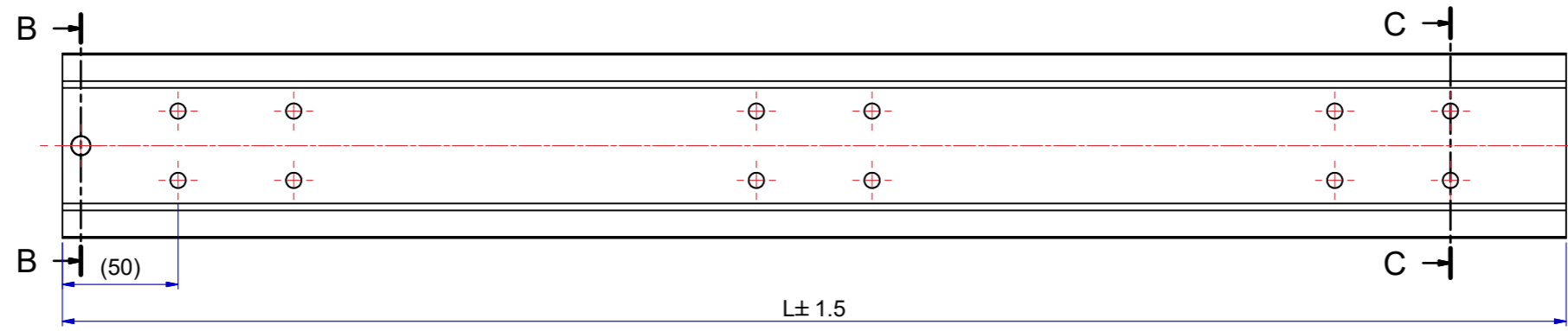


Slide number	Installation length L (mm)	Travel T (mm)	Load per pair (kg) steel	Dimension A	Dimension B	Dimension C
13880S42	300	300	640	50	-	100
13880S43	350	350	680	50	-	150
13880S44	400	400	720	50	-	200
13880S45	450	450	760	50	-	250
13880S46	500	500	790	50	-	300
13880S47	550	550	830	50	-	350
13880S48	600	600	850	50	-	400
13880S49	650	650	860	50	200	-
13880S50	700	700	865	50	225	-
13880S51	750	750	875	50	250	-
13880S52	800	800	880	50	275	-
13880S53	850	850	870	50	300	-
13880S54	900	900	860	50	325	-
13880S55	950	950	850	50	350	-
13880S56	1000	1000	840	50	375	-
13880S57	1050	1050	820	50	400	-
13880S58	1100	1100	800	50	425	-
13880S59	1150	1150	780	50	450	-
13880S60	1200	1200	760	50	475	-



The load capacities are based on a 1% deflection test based on a simulation model (Finite Element Analysis)  
 Load capacity in practice always depends on mounting use and other external factors that can influence this.  
 Tolerance ±0,5mm measured from reference point.

Designer M. Urlings	Gen.Tol.Dim. ± 0,5	Third angle projection	Material	
Date 18-7-2018	Gen.Tol.Angle ± 0,5		Treatment	
Approver	Gen.Roughness Ra		Draw type Fabrication	Doc.No. E000147156
Date	Units mm/deg.		Scale 1 : 2	Type
Description <b>SUPREME TR8030 - (30)</b>				
Format A2	THOMAS REGOUT INTERNATIONAL B.V.		Item No. 13880-Sxx	Released for Production
Rev 01		Date 13-6-2023		Revision 01
Description REVISIED MODEL AND TABLE.		Designer R.G		

Rev	Date	Description	Designer
01	13-6-2023	REVISIED MODEL AND TABLE.	R.G