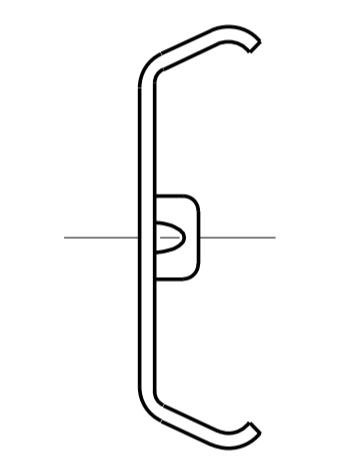
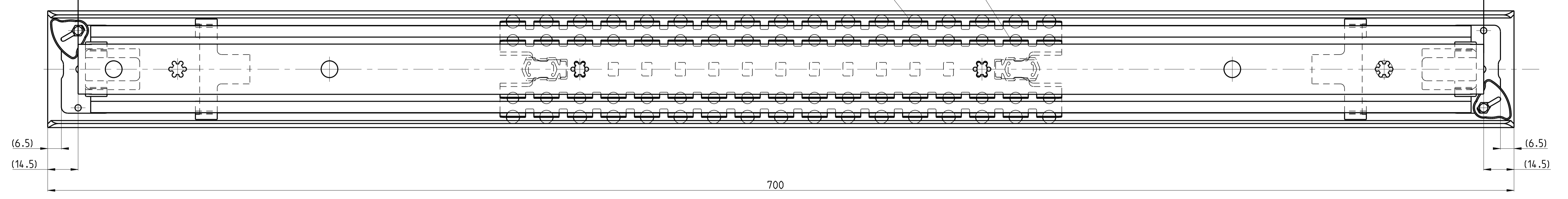
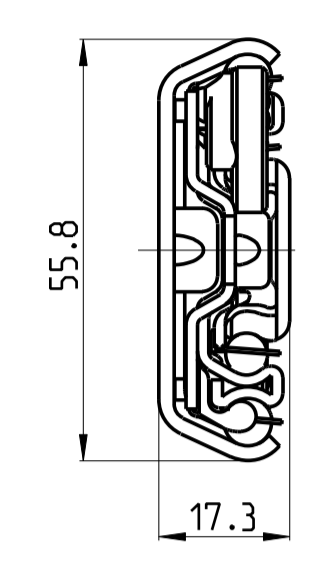


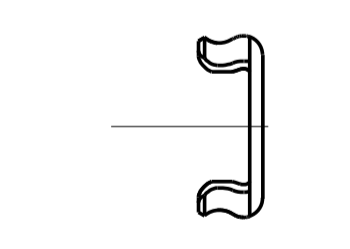
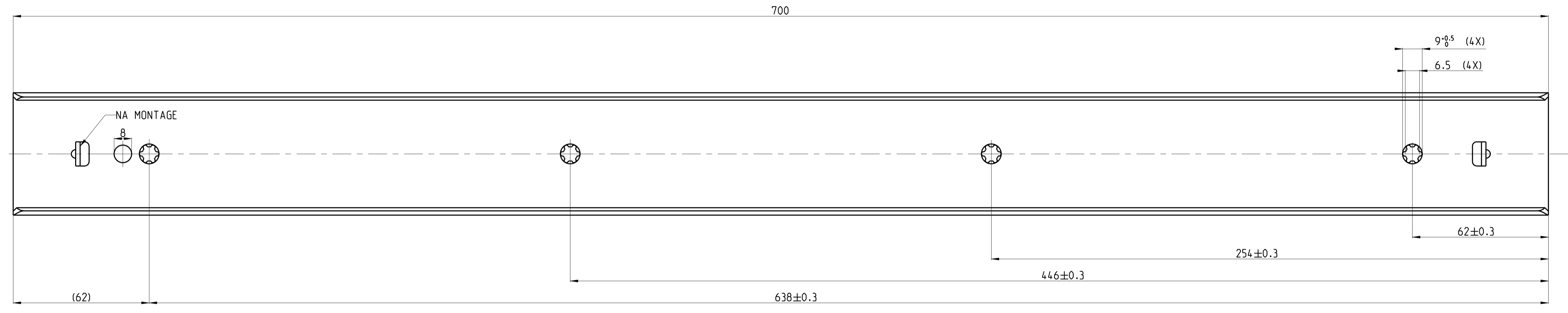
T1-2 = 344  
T2-3 = 367

UITTREKBAARHEID  
AUSZIEHBARE LAENGE 711.0 $\pm$ 4 mm

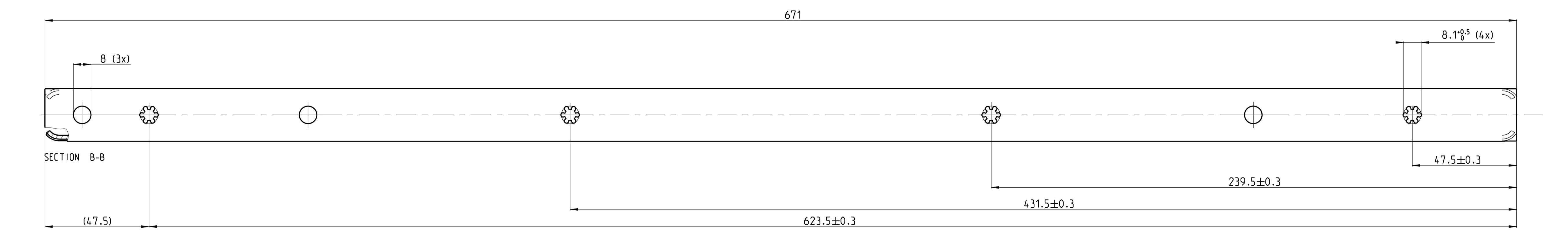
UITTREKBAARHEID  
AUSZIEHBARE LAENGE 711.0 $\pm$ 4 mm



511-12-509-HDB



513-12-509-UA3



PRO/ENGINEER Drawing		Dimensions between marks are guide dimensions. Tolerances unless otherwise stated $\pm$ 0.5mm.		Thomas Regout Int. B.V. reserves the right to alter non-customer specific specifications without notice.	
Was: - -					
American projection	DIMENSION	mm	MAT.: -		
	SCALE	1:1	REM.: RECHTSE UITVOERING = LINKSE UITVOERING		
	DATE	15-06-1999	RECHTE SCHIENE = LINKE SCHIENE		
	DESIGNER	M. Gilissen			
	CHECKED	-			
ULF HD 700.0 / 711.0 / 711.0 (17.3mm)					
THOMAS REGOUT INTERNATIONAL BV				Drw. Nr.	Format.
© Thomas Regout International BV All rights are reserved.				112-509 _ 01	A1
				Production	