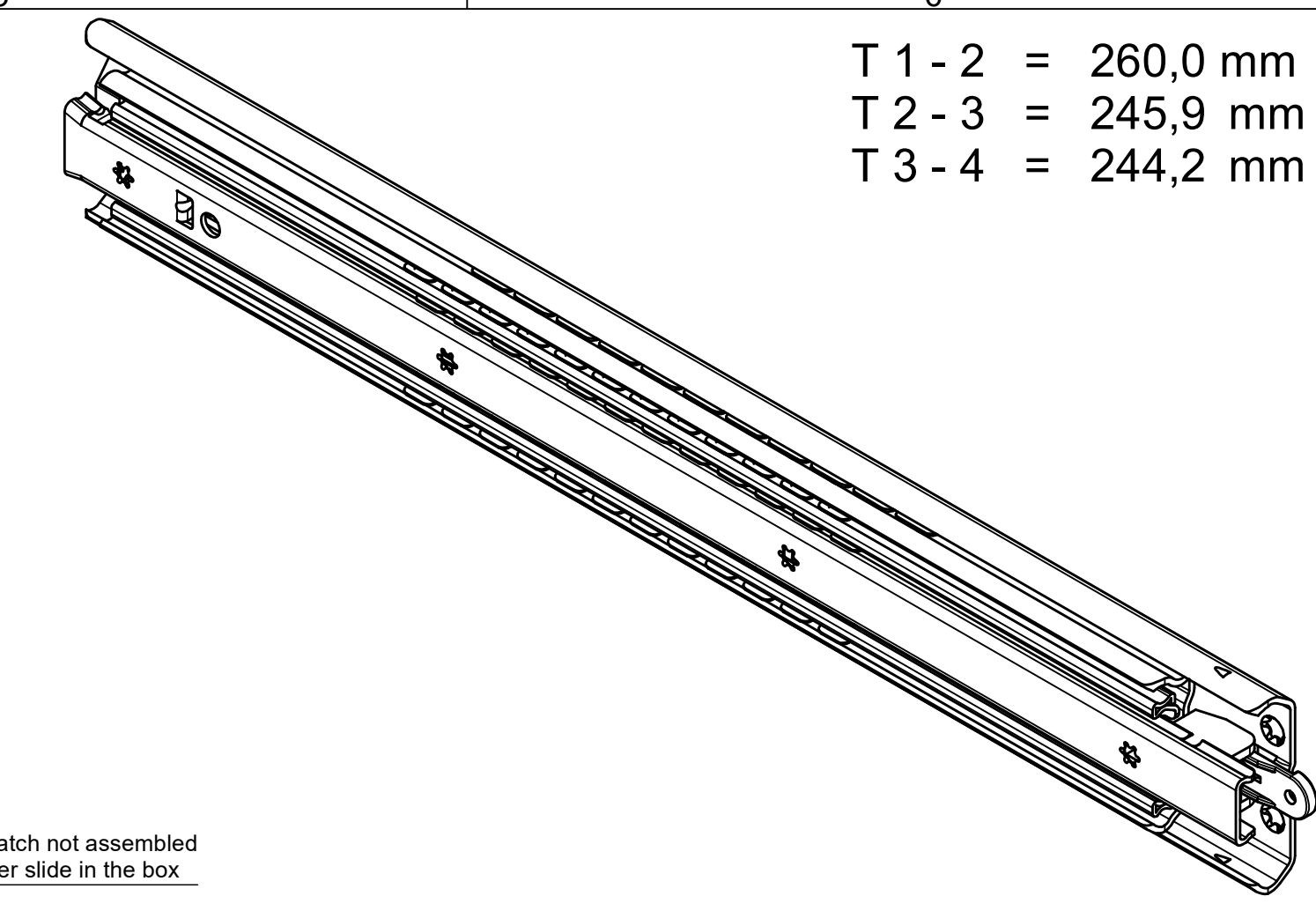
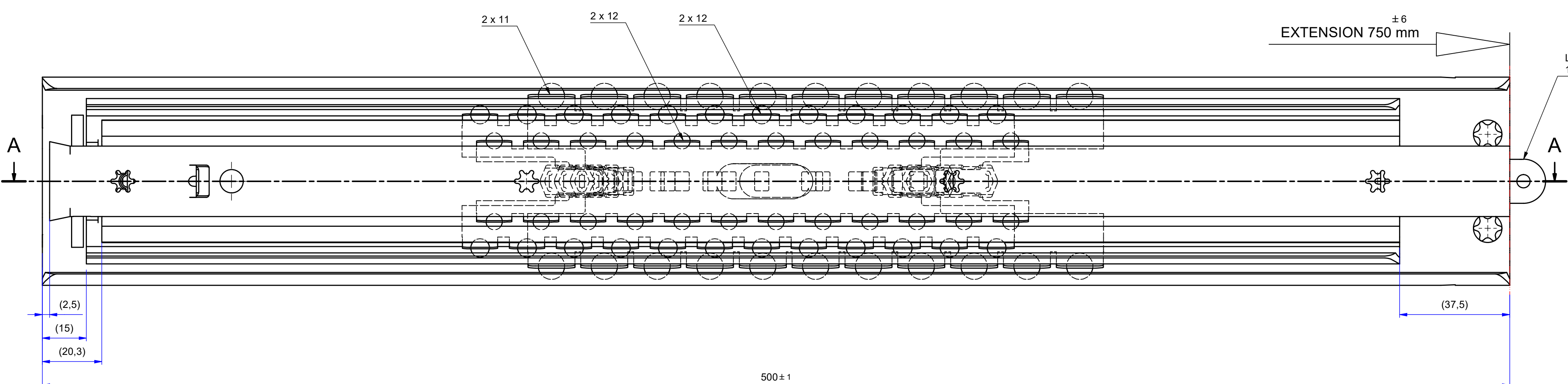


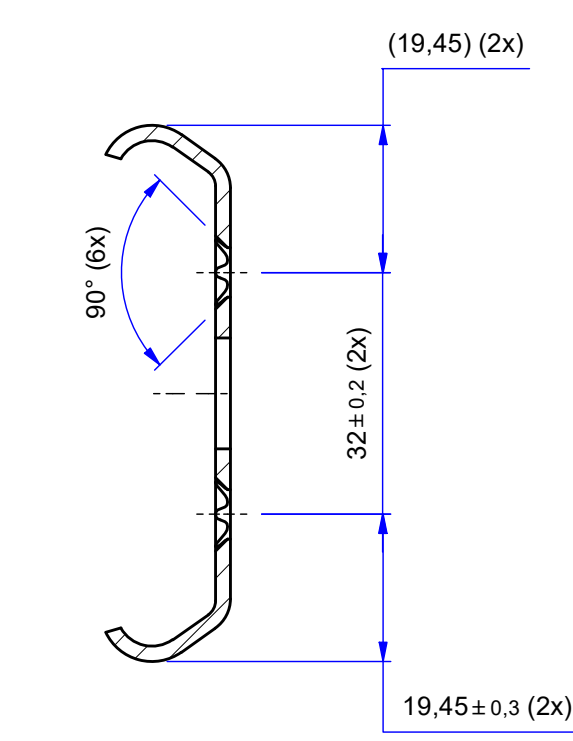
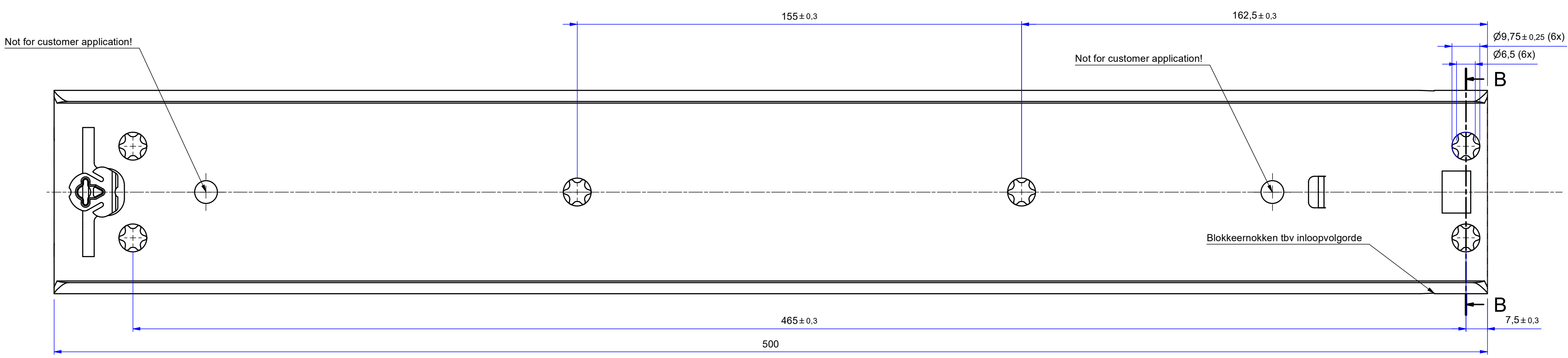
A-A (1:1)



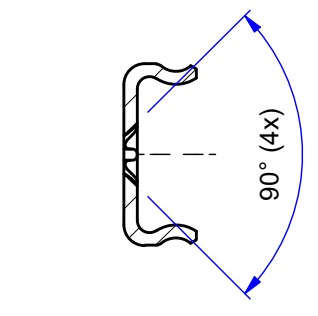
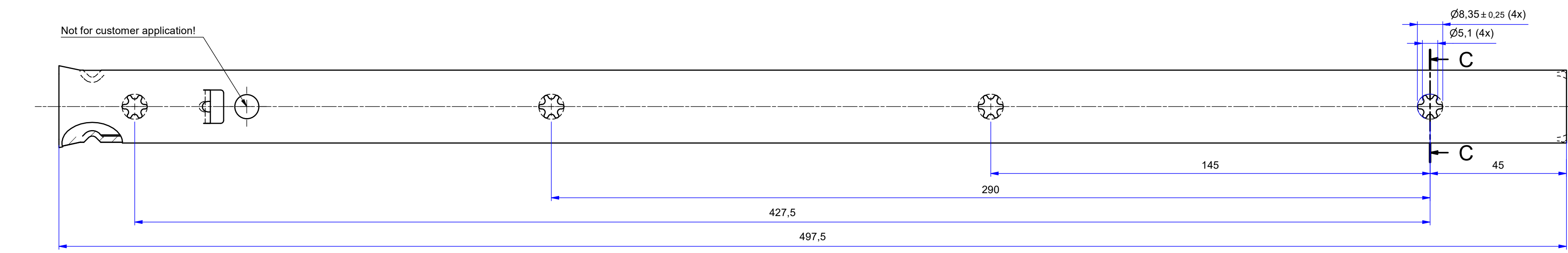
T 1-2 = 260,0 mm
T 2-3 = 245,9 mm
T 3-4 = 244,2 mm



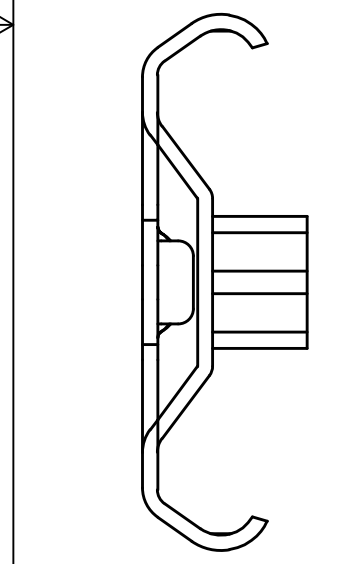
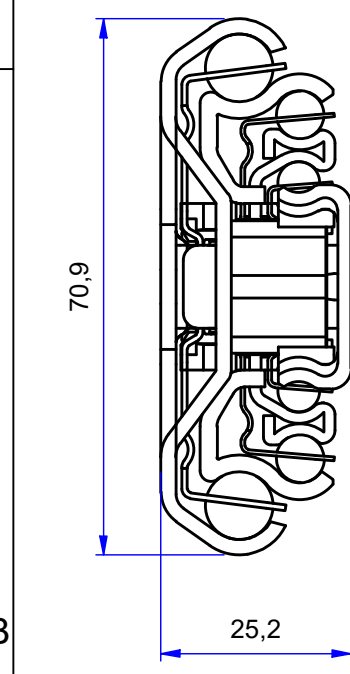
FRONT



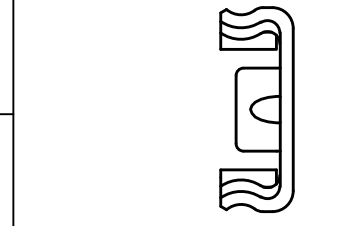
B-B (1:1)



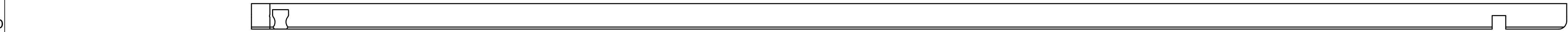
C-C (1:1)



511-11-M34-TA1



514-11-M34-UB3



Left hand slide = Left hand slide.

Dimensions between marks are guide dimensions.

Thomas Regout Int. B.V. reserves the right to alter non-customer specific specifications without notice.

Released for Production

Designer M. Bulte	Gen.Tol.Dim. ± 0,5	Third angle projection	Material
Date 8-3-2007	Gen.Tol.Angle ± 0,5		Treatment
Approver	Gen.Roughness Ra		Draw type Fabrication
Date	Units mm/deg.	Scale 1 : 1	Type Model No. E000146491

Description
CONDOR 500.0 / 750.0 (25.1mm)

Format A1	THOMAS REGOUT INTERNATIONAL B.V.	Item No. 111-M34	Revision 01
-----------	----------------------------------	------------------	-------------

© THOMAS REGOUT INTERNATIONAL BV, Industrieweg 40, 6219 NR, Maastricht, The Netherlands, +31 (0)43 351 66 66 All rights are reserved.

01	28-03-2023	Implemented stopping system S111-11-06 and S111-11-07 to profile 511-11-M34-TA1; changed ball bearing from 51541811V82 to 51541411V100 and 51570111V73.5 to 51572912V73.5	M. Meijers
Rev	Date	Description	Designer