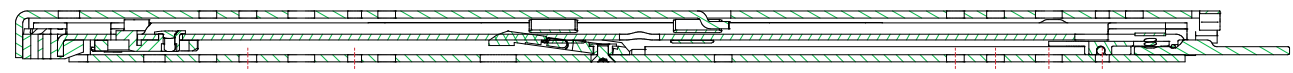
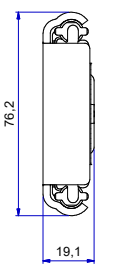


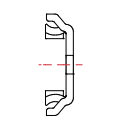
T 1-2 = 233,3
T 2-3 = 230,7



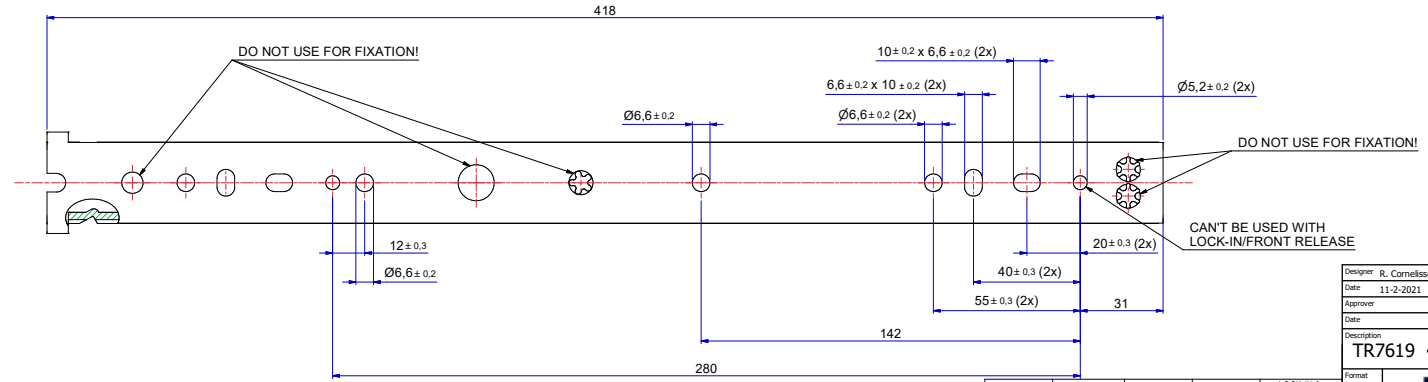
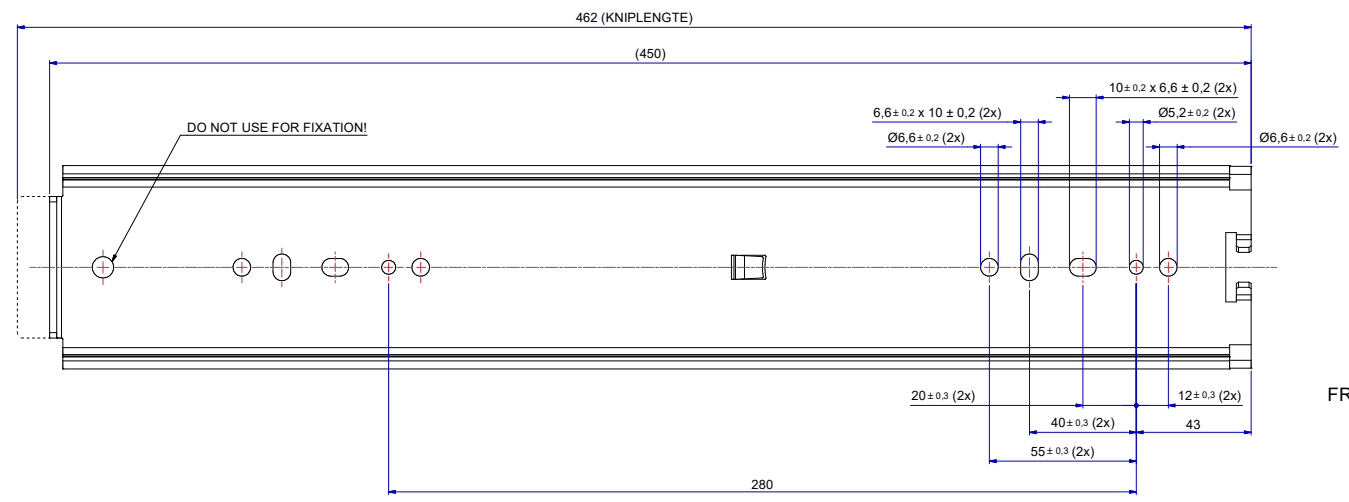
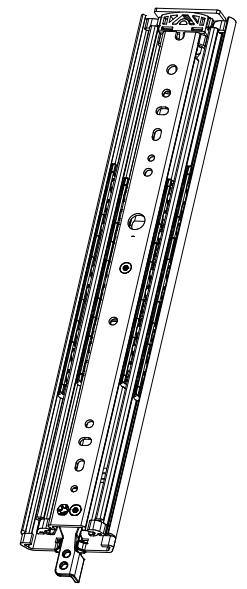
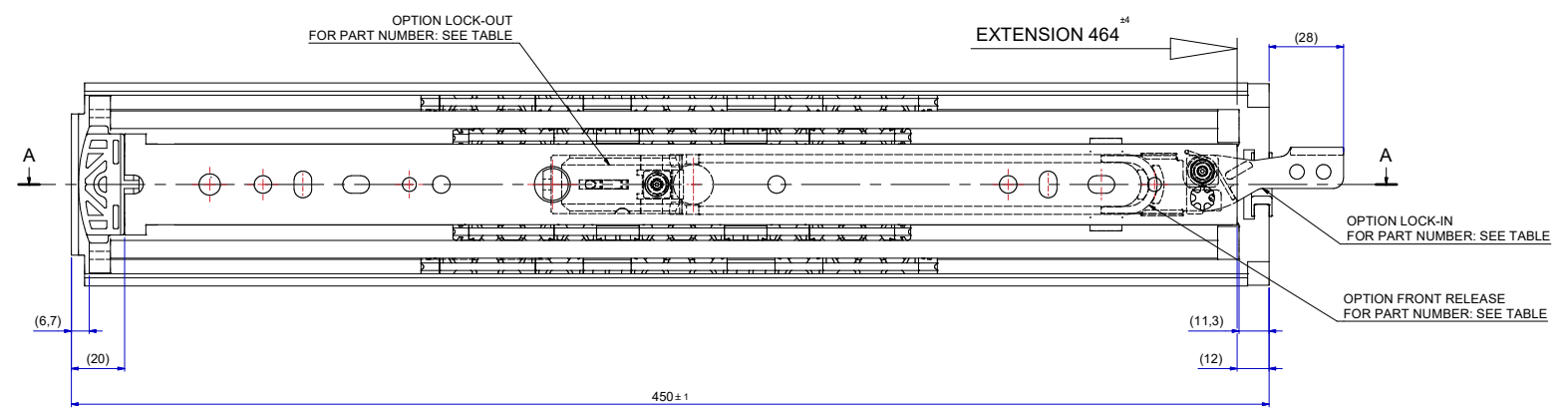
A-A (1:1)



511-14-S34-TC1



513-14-S34-TC3



SLIDE
RIGHT HAND = LEFT HAND
LOCK-IN/FRONT-RELEASE
RIGHT HAND SIDE SHOWN, LEFT HAND SIDE IS MIRRORED

DIMENSIONS BETWEEN MARKS ARE GUIDE DIMENSIONS.
THOMAS REGOUT INT. B.V. RESERVES THE RIGHT TO ALTER
NON-CUSTOMER SPECIFIC SPECIFICATIONS WITHOUT NOTICE.

Designer	R. Cornelissen	Gen.Tol.Dim.	± 0.5	Third angle projection	Material
Date	11-2-2021	Gen.Tol.Angle	± 0.5		Treatment
Approver		Gen.Roughness	Ra		Draw type
Date		Units	mm/deg.	Scale	1 : 1
Description				Type	
TR7619 450 / 464 (19,1mm)				Model No. E00012303	

Format	A1	THOMAS REGOUT INTERNATIONAL B.V.	Item No.	114-S34	Revision	00
--------	----	----------------------------------	----------	---------	----------	----

PART NUMBER	114S34	LOCK-IN	114S34A	LOCK-OUT	114S34B	LOCK-IN & LOCK-OUT & FRONT-RELEASE	114S34C
-------------	--------	---------	---------	----------	---------	------------------------------------	---------