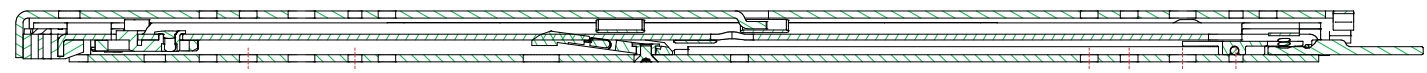
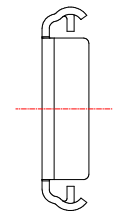
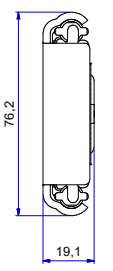


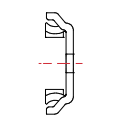
T 1-2 = 247,3
T 2-3 = 264,7



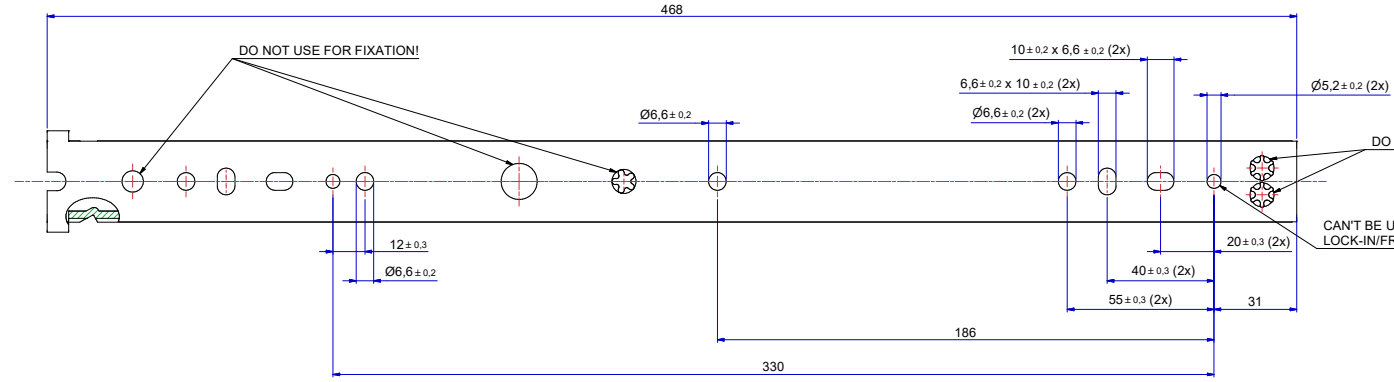
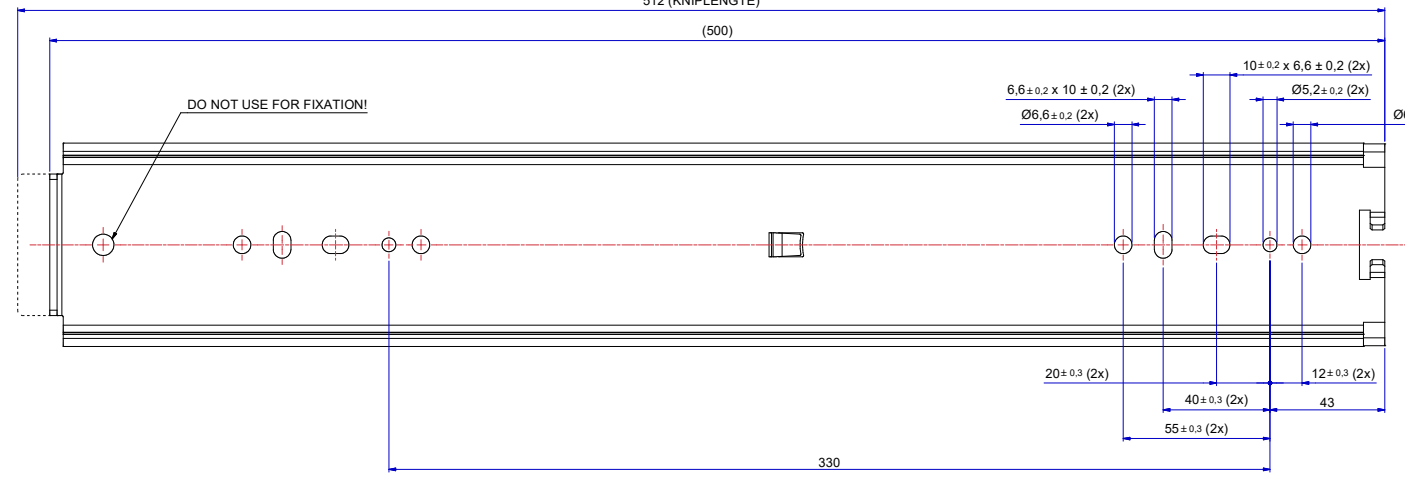
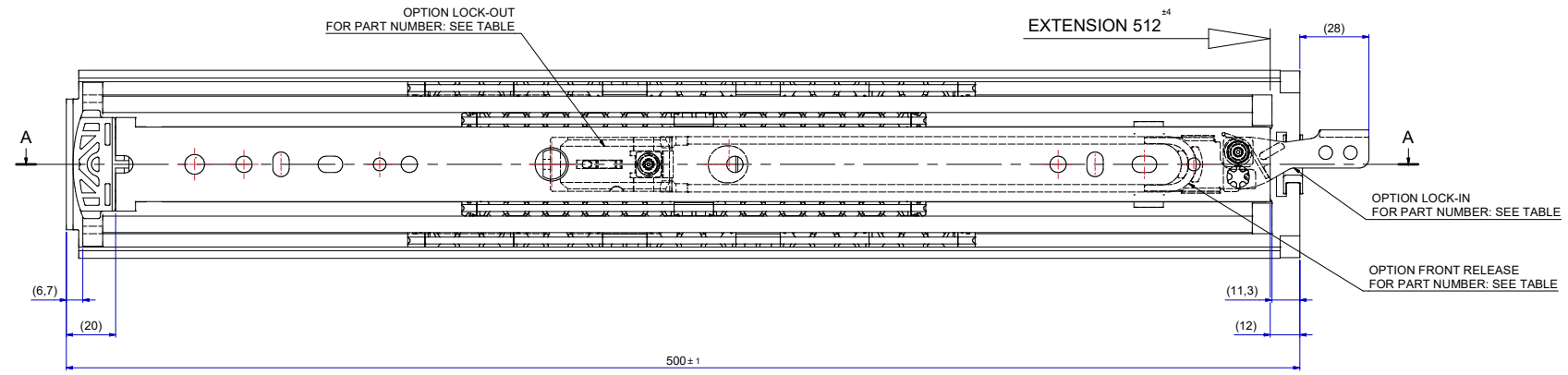
A-A (1:1)



511-14-S35-TC1



513-14-S35-TC3



FRONT

SLIDE
RIGHT HAND = LEFT HAND
LOCK-IN/FRONT-RELEASE
RIGHT HAND SIDE SHOWN, LEFT HAND SIDE IS MIRRORED

DIMENSIONS BETWEEN MARKS ARE GUIDE DIMENSIONS.
THOMAS REGOUT INT. B.V. RESERVES THE RIGHT TO ALTER
NON-CUSTOMER SPECIFIC SPECIFICATIONS WITHOUT NOTICE.

Designer	R. Cornelissen	Gen.Tol.Dim.	± 0,5	Third angle projection	Material
Date	11-2-2021	Gen.Tol.Angle	± 0,5	Treatment	
Approver		Gen.Roughness	Ra	Draw type	Fabrication
Date		Units	mm/deg.	Scale	1 : 1
Description				Doc.No.	E000115440
TR7619 500 / 512 (19,1mm)				Model No.	E000012303

Format	A1	Item No.	114-S35	Revision	00
--------	----	----------	---------	----------	----

PART NUMBER	STANDARD	LOCK-IN	LOCK-OUT	LOCK-IN & LOCK-OUT & FRONT-RELEASE
	114S35	114S35A	114S35B	114S35C