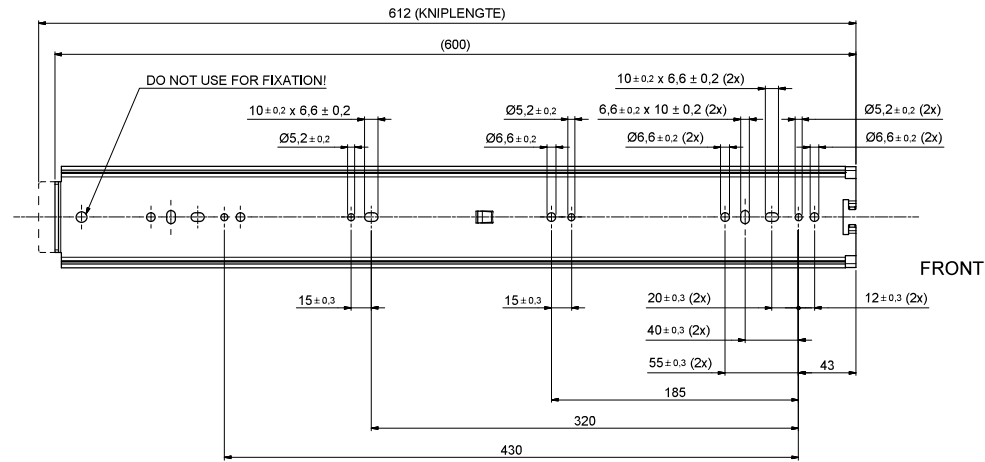
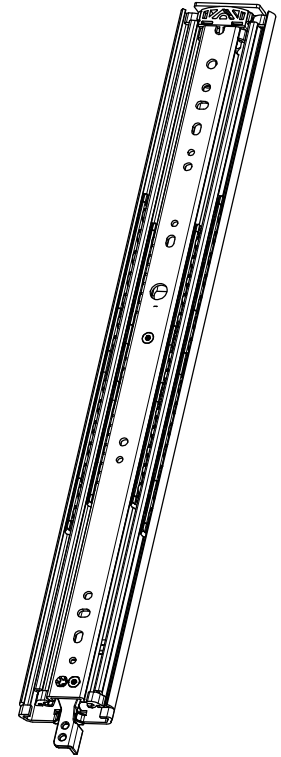
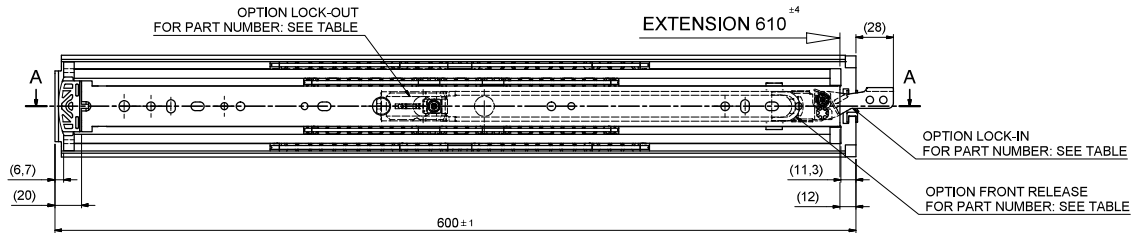
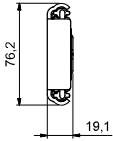
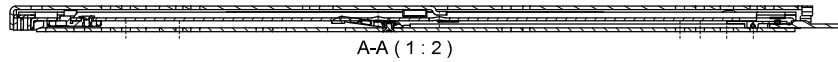
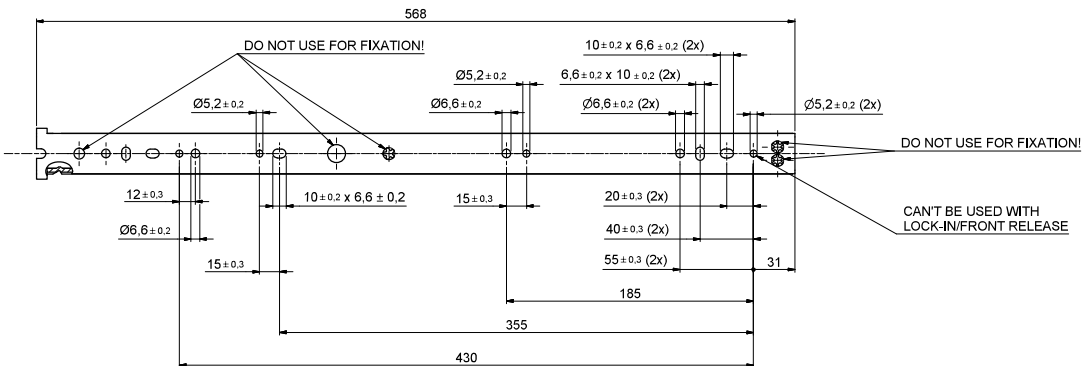
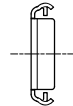


T 1-2 = 293,3
T 2-3 = 316,7



511-14-S37-TC1



513-14-S37-TC3



SLIDE
RIGHT HAND = LEFT HAND
LOCK-IN/FRONT-RELEASE
RIGHT HAND SIDE SHOWN, LEFT HAND SIDE IS MIRRORED

DIMENSIONS BETWEEN MARKS ARE GUIDE DIMENSIONS.
THOMAS REGOUT INT. B.V. RESERVES THE RIGHT TO ALTER
NON-CUSTOMER SPECIFIC SPECIFICATIONS WITHOUT NOTICE.

Designer	R. Cornelisse	Gen.Tel.Dim.	± 0,5	Third angle projection	Material
Date	11-2-2021	Gen.Tel.Angle	± 0,5		Treatment
Approver		Gen.Roughness	Ra	Draw type	Fabrication
Date		Units	mm/deg.	Scale	1 : 2
Description				Type	Model No. E000115453

TR7619 600 / 610 (19,1mm)

Released for Production

Format	A1	STANDARD	114S37	LOCK-IN	114S37A	LOCK-OUT	114S37B	LOCK-IN & LOCK-OUT & FRONT-RELEASE	114S37D
Part Number									

Item No.	114-S37	Revision	00
----------	---------	----------	----