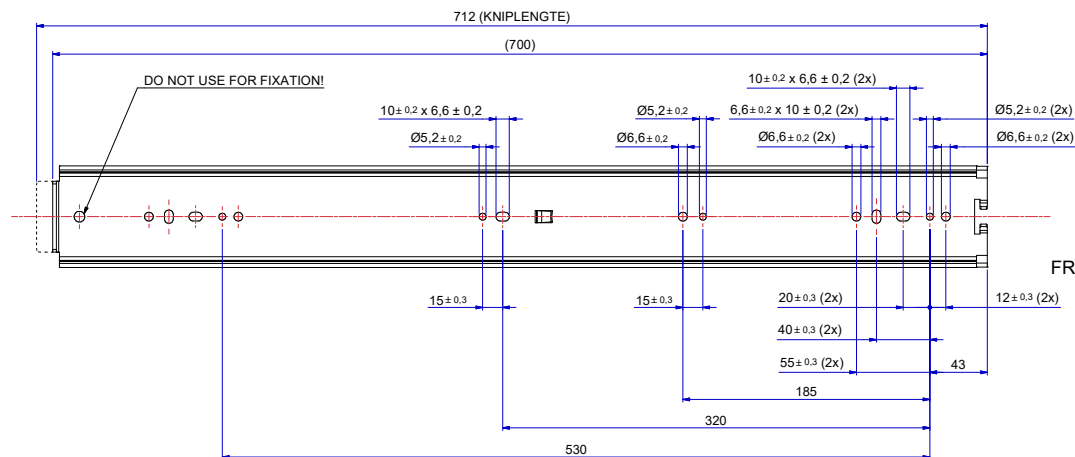
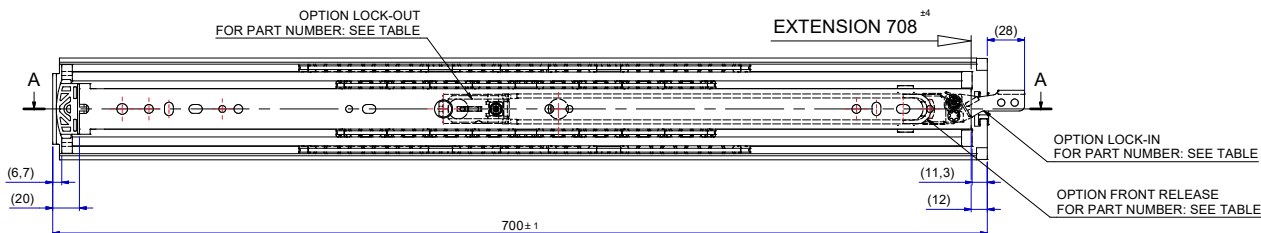
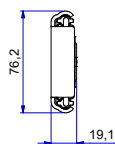
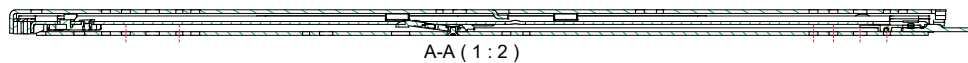
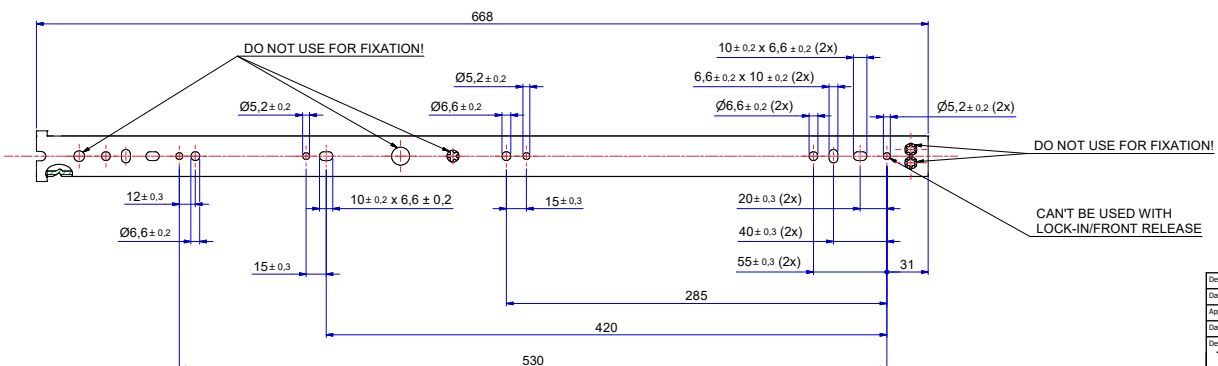


T 1-2 = 339,3  
T 2-3 = 368,7



511-14-S38-TC1

FRONT



513-14-S38-TC3

SLIDE  
RIGHT HAND = LEFT HAND  
LOCK-IN/FRONT-RELEASE  
RIGHT HAND SIDE SHOWN, LEFT HAND SIDE IS MIRRORED

DIMENSIONS BETWEEN MARKS ARE GUIDE DIMENSIONS.  
THOMAS REGOUT INT. B.V. RESERVES THE RIGHT TO ALTER  
NON-CUSTOMER SPECIFIC SPECIFICATIONS WITHOUT NOTICE.

Designer	R. Cornelisse	Gen.Tol.Dim.	± 0.5	Third angle projection	Material
Date	11-2-2021	Gen.Tol.Angle	± 0.5	Treatment	
Approver		Gen.Roughness	Ra	Draw type	Fabrication
Date		Units	mm/deg.	Scale	1 : 2
				Type	Model No. E000115513

Description  
**TR7619 700 / 708 (19,1mm)**

Format	A1	THOMAS REGOUT INTERNATIONAL B.V.	Item No.	114-S38	Revision	00
--------	----	----------------------------------	----------	---------	----------	----

STANDARD	114S38	LOCK-IN	114S38A	LOCK-OUT	114S38B	LOCK-IN & LOCK-OUT & FRONT-RELEASE	114S38C
PART NUMBER	114S38						