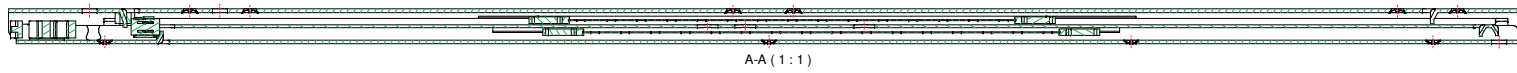
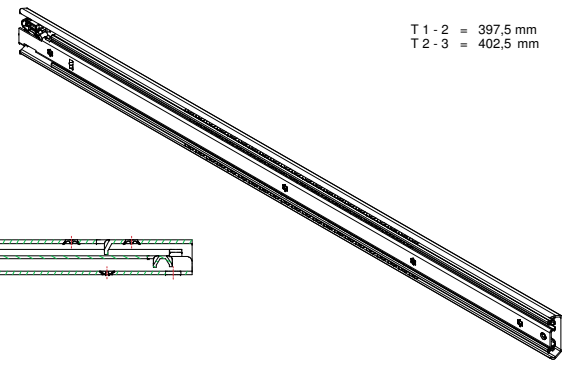
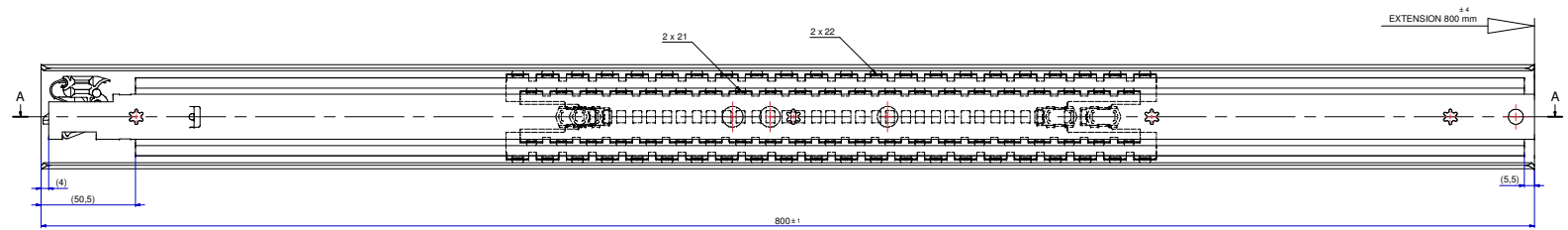
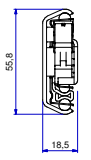


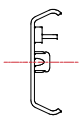
T 1 - 2 = 397,5 mm
T 2 - 3 = 402,5 mm



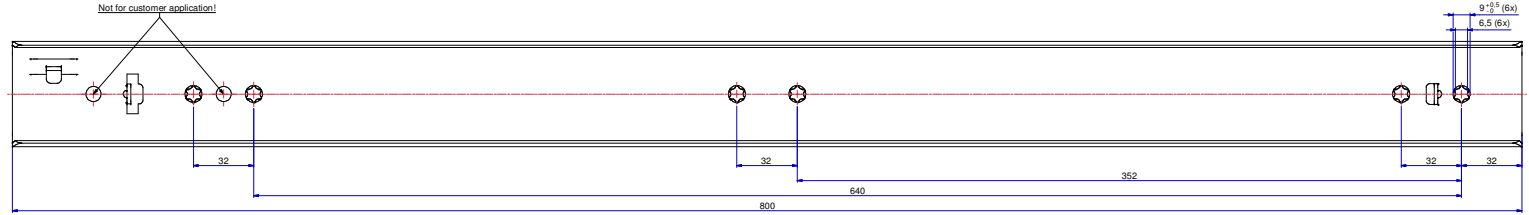
A-A (1:1)



Not for customer application!



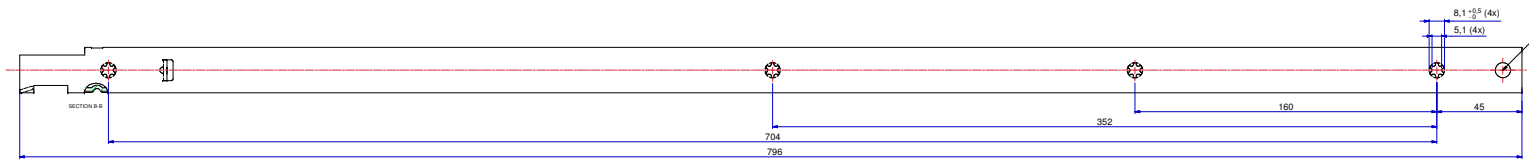
511-12-S69-HDB



FRONT



513-12-S69-UB3



Not for customer application!

Right hand slide = Left hand slide.
Dimensions between marks are guide dimensions.

Thomas Regout Int. B.V. reserves the right to alter non-customer specific specifications without notice.

Customer: H. Mollier	Order No.: 0.5	Order date: 09-11-2011	Order No.: 0.5	Order date: 09-11-2011	Order No.: 0.5
Approval: mm	Unit: mm	Scale: 1:1	Material: 6063	Finish: Anodized	Doc No.: E000025496
Description: LULF HD 800.0 / 800.0 (18,5mm) Type F			Released for Production		

PRODUCTION

THOMAS REGOUT INTERNATIONAL B.V.
112-569 00