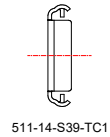
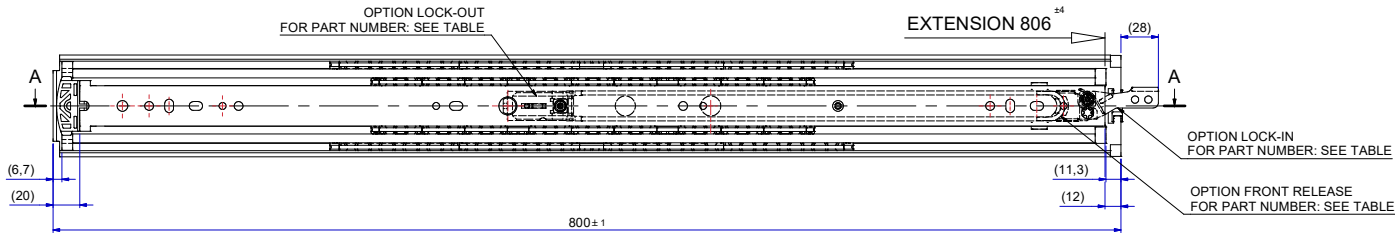
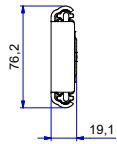
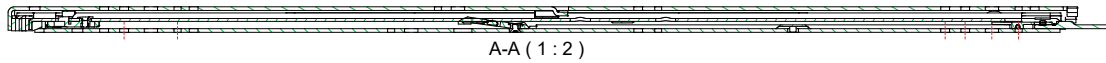
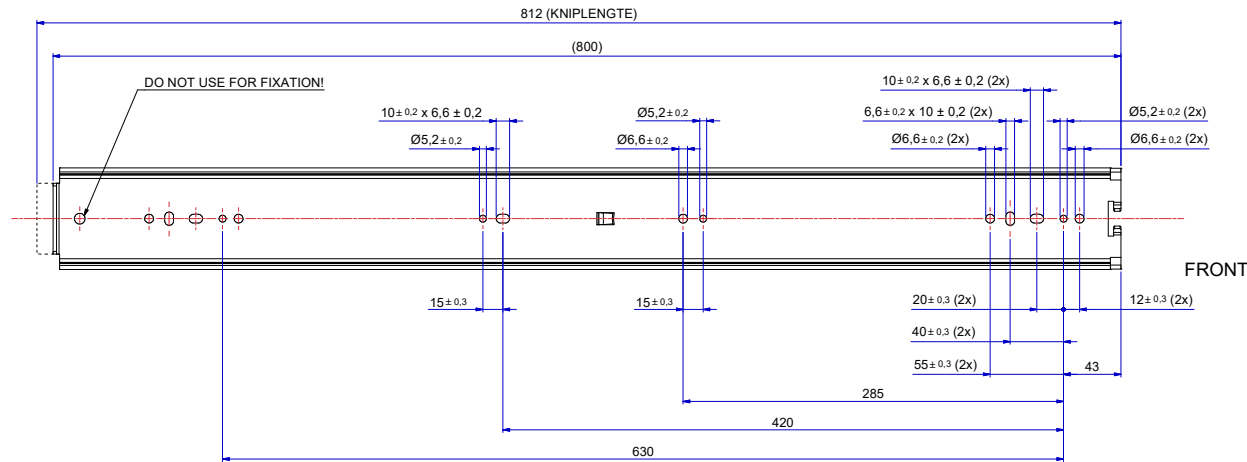


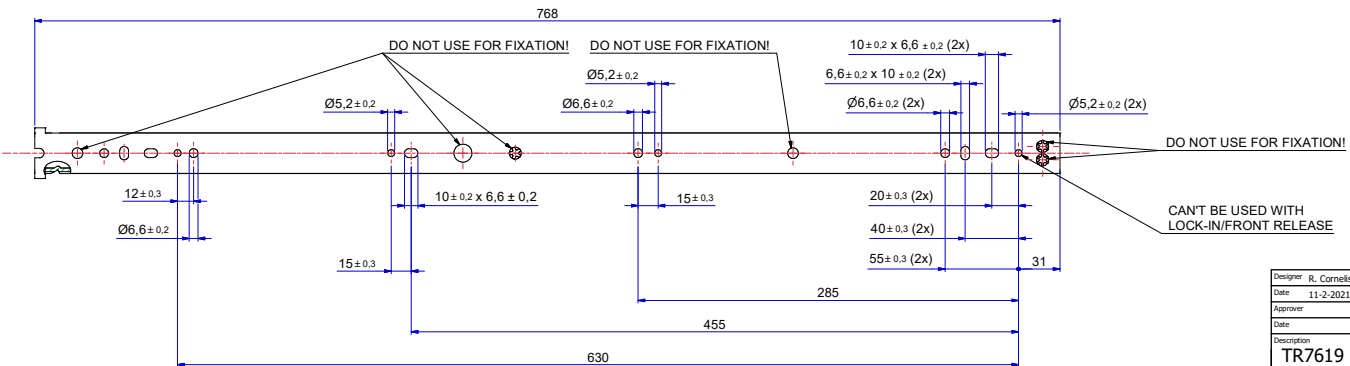
T 1-2 = 385,3  
T 2-3 = 420,7



511-14-S39-TC1



513-14-S39-TC3



SLIDE  
RIGHT HAND = LEFT HAND  
LOCK-IN/FRONT-RELEASE  
RIGHT HAND SIDE SHOWN, LEFT HAND SIDE IS MIRRORED

DIMENSIONS BETWEEN MARKS ARE GUIDE DIMENSIONS.  
THOMAS REGOUT INT. B.V. RESERVES THE RIGHT TO ALTER  
NON-CUSTOMER SPECIFIC SPECIFICATIONS WITHOUT NOTICE.

Designer	R. Cornelissen	Gen.Tol.Dim.	± 0.5	Third angle projection	Material
Date	11-2-2021	Gen.Tol.Angle	± 0.5		Treatment
Approver		Gen.Roughness	Ra		Draw type
Date		Units	mm/deg.	Scale	1 : 2
		Type		Doc.No.	E000115555
				Model No.	E000012303

Description  
**TR7619 800 / 806 (19,1mm)**

Format  
**A1**

Item No.  
**114-S39**

Revision  
**00**

STANDARD	LOCK-IN	LOCK-OUT	LOCK-IN & LOCK-OUT & FRONT-RELEASE
114S39	114S39A	114S39B	114S39C