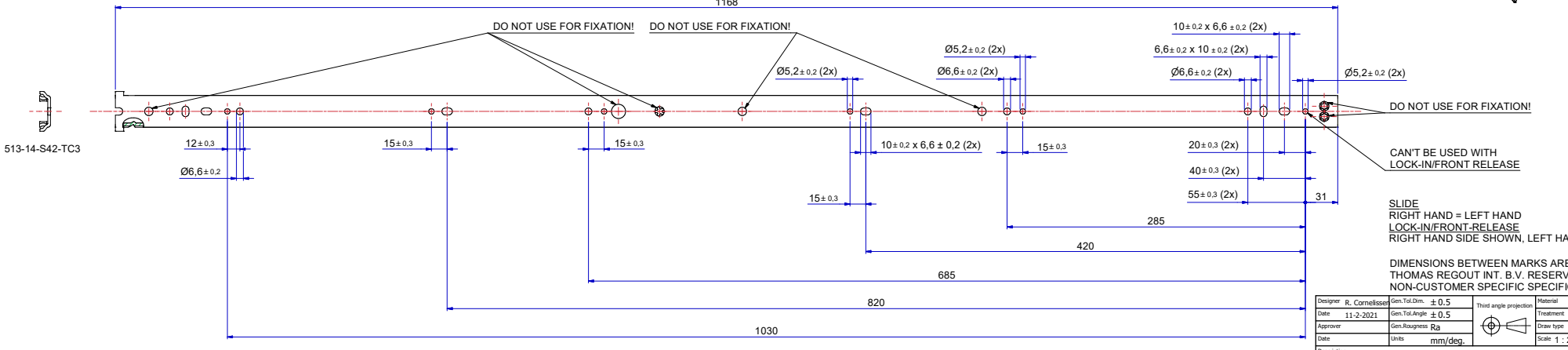
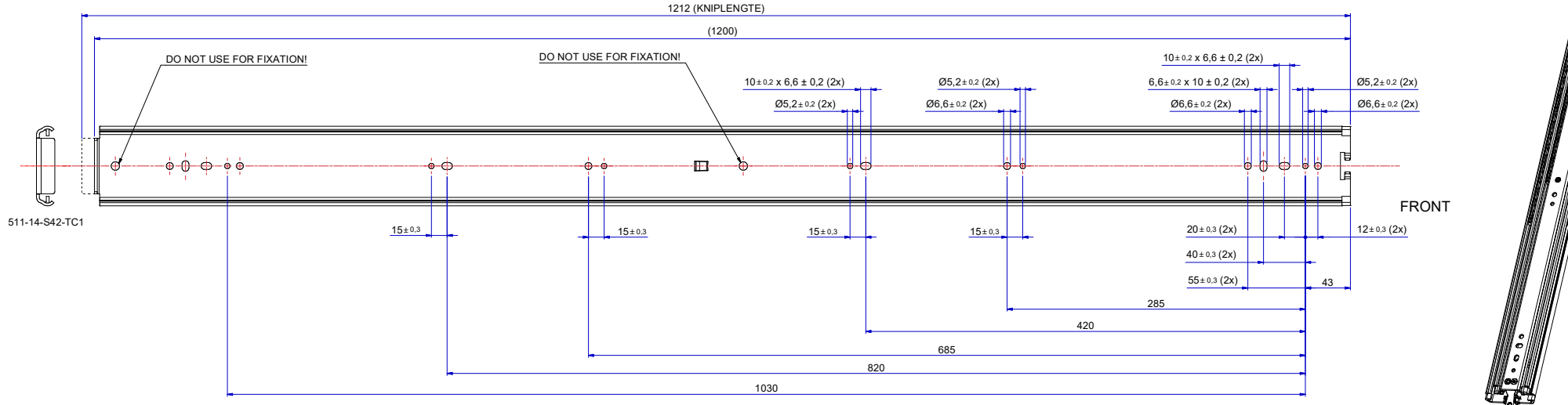
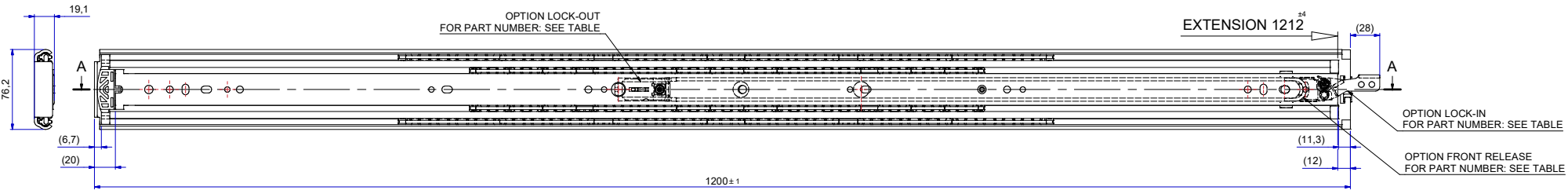
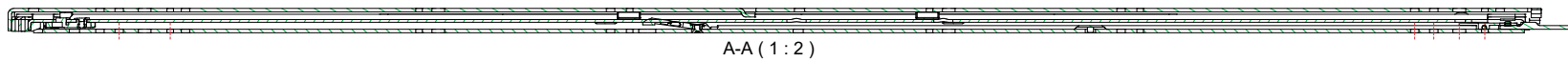


T 1-2 = 551,3
T 2-3 = 660,7



SLIDE
RIGHT HAND = LEFT HAND
LOCK-IN/FRONT-RELEASE
RIGHT HAND SIDE SHOWN, LEFT HAND SIDE IS MIRROR

DIMENSIONS BETWEEN MARKS ARE GUIDE DIMENSIONS.
THOMAS REGOUT INT. B.V. RESERVES THE RIGHT TO ALTER
NON-CUSTOMER SPECIFIC SPECIFICATIONS WITHOUT NOTICE.

Designer	R. Cornelisse	Gen.Tol.Dim.	± 0.5	Third angle projection	Material
Date	11-2-2021	Gen.Tol.Angle	± 0.5		Treatment
Approver		Gen.Roughness	Ra		Draw type: Fabrication
Date		Units	mm/deg.	Scale	1 : 2 Type Model No. E00012303

Description
TR7619 1200 / 1212 (19,1mm)

Format	A1	STANDARD	114S42	LOCK-IN	114S42A	LOCK-OUT	114S42B	LOCK-IN & LOCK-OUT & FRONT-RELEASE	114S42Z	Item No.	114-S42	Revision	00
--------	----	----------	--------	---------	---------	----------	---------	------------------------------------	---------	----------	---------	----------	----