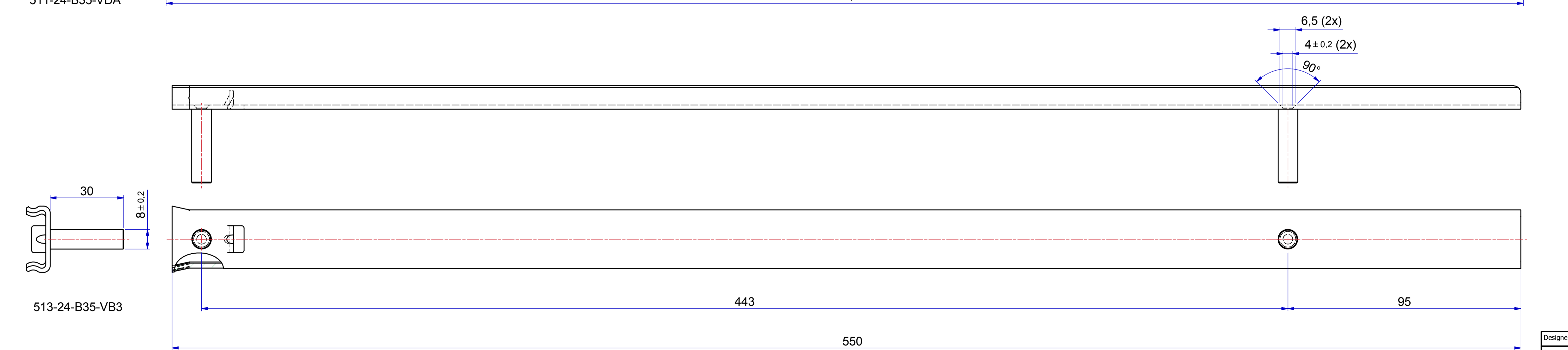
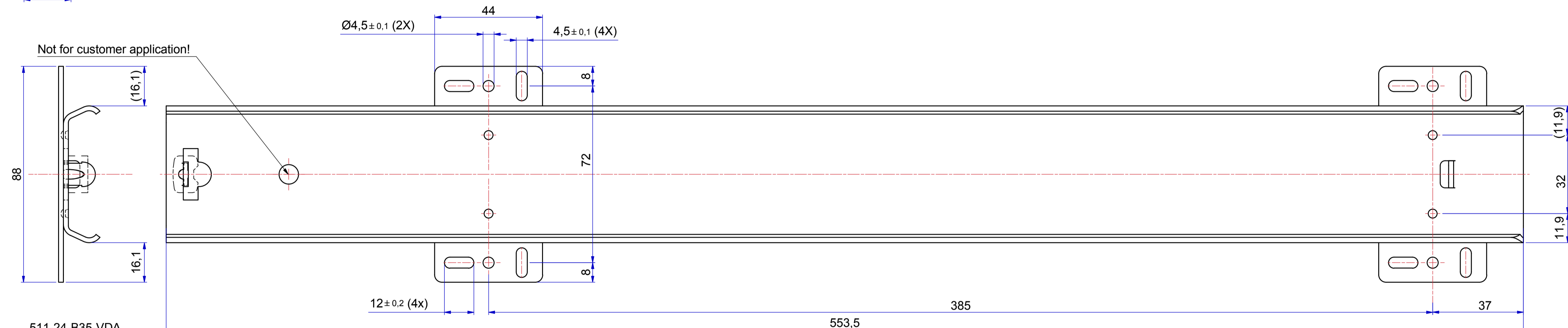
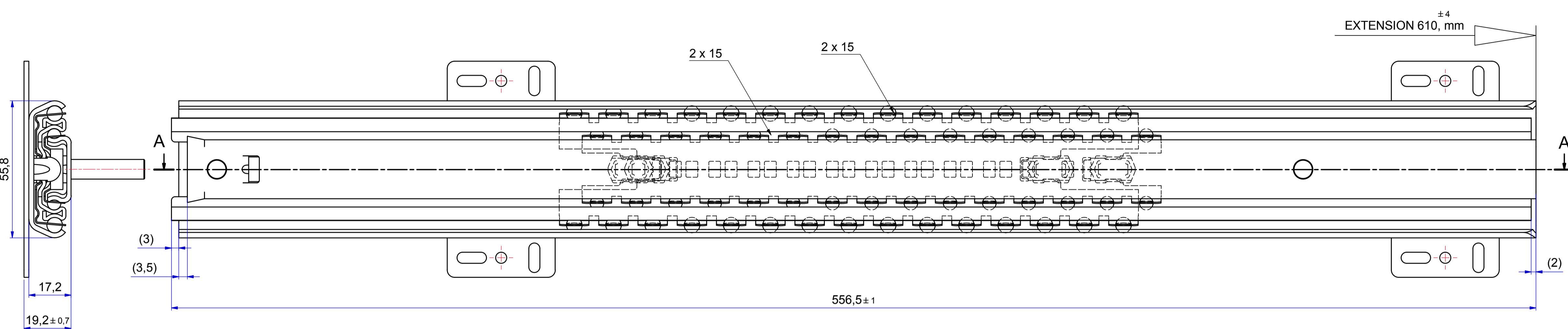
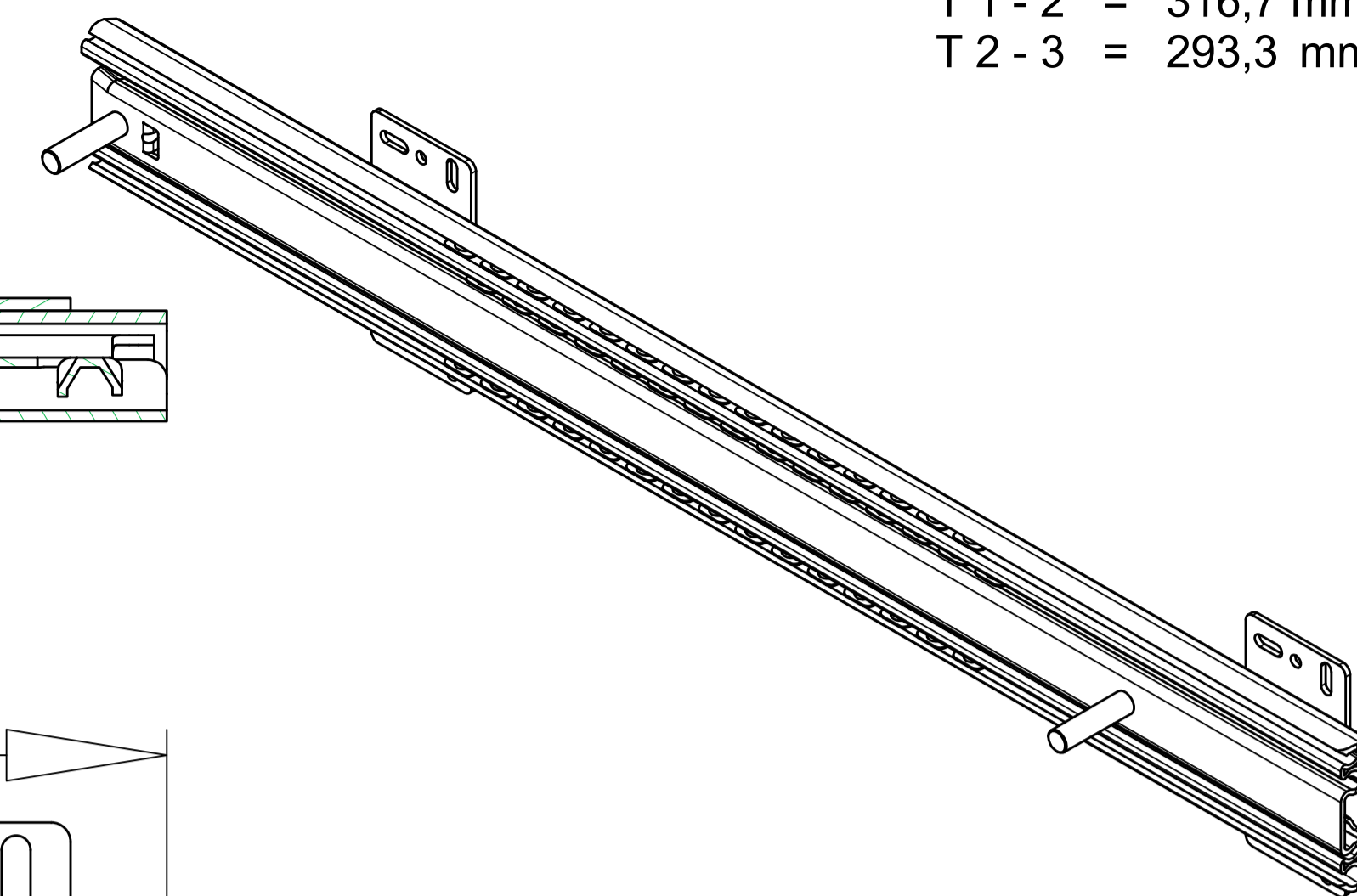
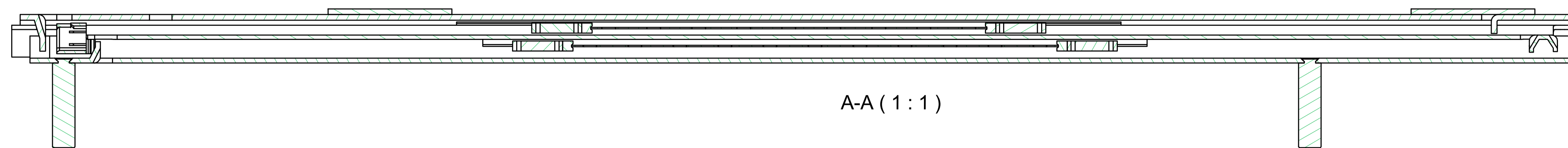


T 1 - 2 = 316,7 mm
T 2 - 3 = 293,3 mm



FRONT

Released for Production

Right hand slide = Left hand slide.
Dimensions between marks are guide dimensions.
Thomas Regout Int. B.V. reserves the right to alter non-customer specific specifications without notice.

Designer	W.Jans	Gen.Tol.Dim.	± 0,5	Third angle projection	Material
Date	26-8-2015	Gen.Tol.Angle	± 0,5		Treatment
Approver		Gen.Roughness	Ra		Draw type
Date		Units	mm/deg.	Scale	1 : 1
Description		ULF HD SV 556,5 / 610.0 (17,2mm)		Model No.	E000034554
Format	A1	Item No.	124-B35	Revision	00
<small>© THOMAS REGOUT INTERNATIONAL BV, Industrieweg 40, 6219 NR, Maastricht, The Netherlands, +31 (0)43 351 66 66 All rights are reserved.</small>					