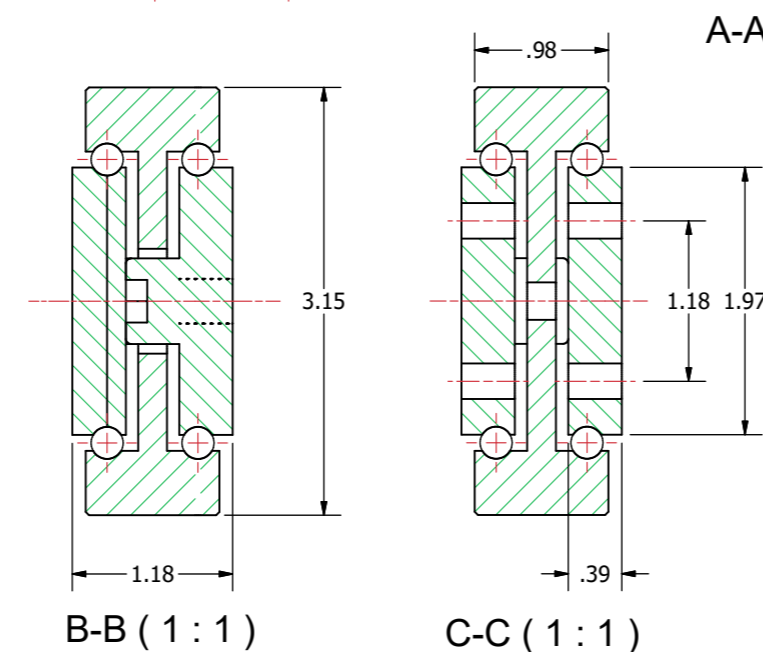
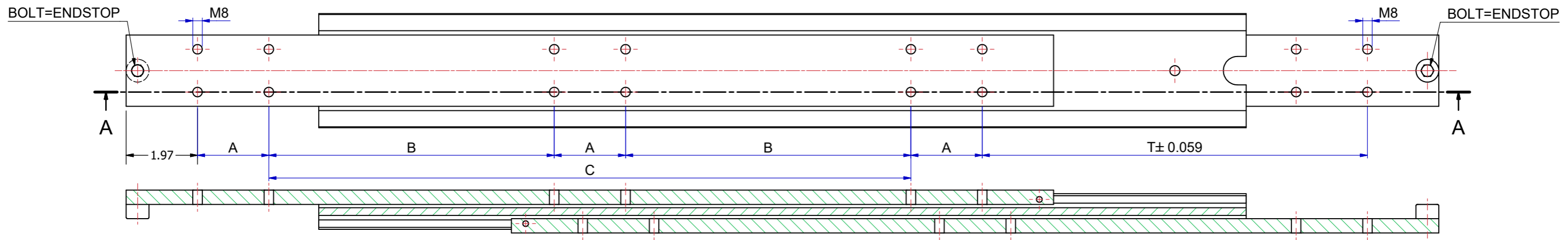
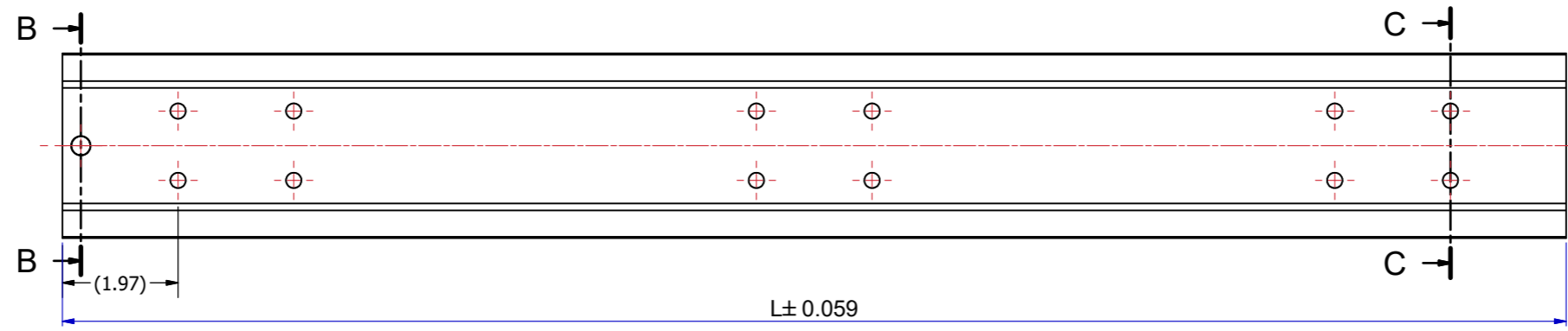


Slide number	Installation length L (inch)	Travel T (inch)	Load per pair (kg) steel	Dimension A	Dimension B	Dimension C
13880542	11,811	11,811	640	1,969	-	3,937
13880543	13,780	13,780	680	1,969	-	5,906
13880544	15,748	15,748	720	1,969	-	7,874
13880545	17,717	17,717	760	1,969	-	9,843
13880546	19,685	19,685	790	1,969	-	11,811
13880547	21,654	21,654	830	1,969	-	13,780
13880548	23,622	23,622	850	1,969	-	15,748
13880549	25,591	25,591	860	1,969	7,874	-
13880550	27,559	27,559	865	1,969	8,858	-
13880551	29,528	29,528	875	1,969	9,843	-
13880552	31,496	31,496	880	1,969	10,827	-
13880553	33,465	33,465	870	1,969	11,811	-
13880554	35,433	35,433	860	1,969	12,795	-
13880555	37,402	37,402	850	1,969	13,780	-
13880556	39,370	39,370	840	1,969	14,764	-
13880557	41,339	41,339	820	1,969	15,748	-
13880558	43,307	43,307	800	1,969	16,732	-
13880559	45,276	45,276	780	1,969	17,717	-
13880560	47,244	47,244	760	1,969	18,701	-



The load capacities are based on a 1% deflection test based on a simulation model (Finite Element Analysis)
 Load capacity in practice always depends on mounting use and other external factors that can influence this.
 Tolerance ±0,5mm measured from reference point.

DIMENSIONS ARE CALCULATED FROM METRIC VALUES
THOMAS REGOUT INT. BV. RESERVES THE RIGHT TO
ALTER NON-CUSTOMER SPECIFICATIONS WITHOUT NOTICE

Designer M. Urlings	Gen.Tol.Dim. ± 0.0197	Third angle projection	Material	
Date 18-7-2018	Gen.Tol.Angle ± 0.0197		Treatment	
Approver	Gen.Roughness Ra		Draw type Fabrication	Doc.No. E000147156
Date	Units inch/deg.		Scale 1 : 2	Type

Description
SUPREME TR8030 - (30)

Format A2	THOMAS REGOUT INTERNATIONAL B.V.	Item No. 13880-Sxx	Released for Production
Rev	Date	Description	Revision
01	13-6-2023	REVISED MODEL AND TABLE.	01

© THOMAS REGOUT INTERNATIONAL BV, Industrieweg 40, 6219 NR, Maastricht, The Netherlands, +31 (0)43 351 66 66 All rights are reserved.

Rev	Date	Description	Designer
01	13-6-2023	REVISED MODEL AND TABLE.	R.G