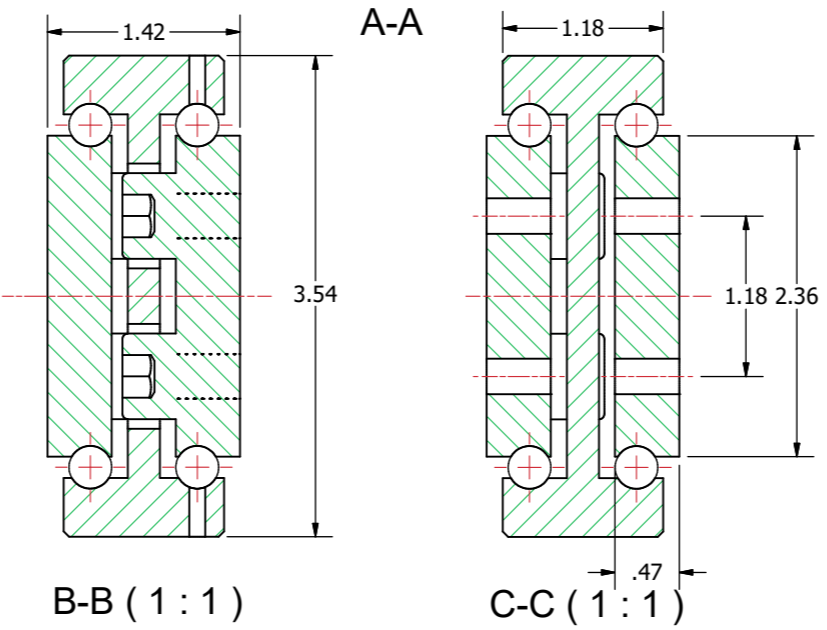
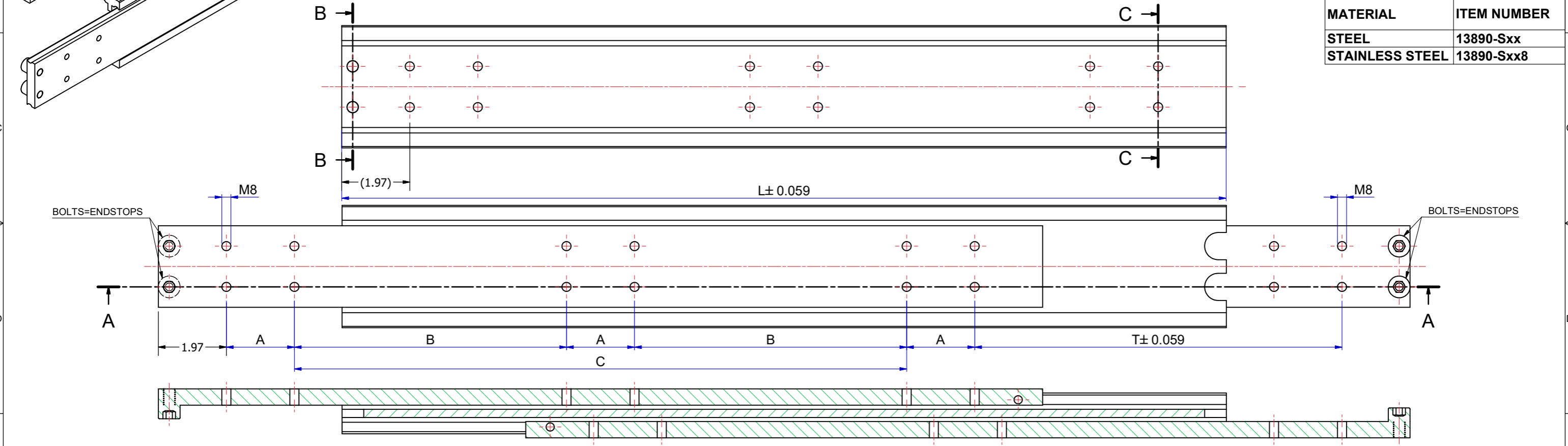


Slide number	Installation length L (inch)	Travel T (inch)	Load per pair (kg) steel	Load per pair (kg) stainless steel	Dimension A	Dimension B	Dimension C
13890S03	11,811	11,811	780	546	1,969	-	3,937
13890S04	13,780	13,780	830	581	1,969	-	5,906
13890S05	15,748	15,748	860	602	1,969	-	7,874
13890S06	17,717	17,717	890	623	1,969	-	9,843
13890S07	19,685	19,685	940	658	1,969	-	11,811
13890S08	21,654	21,654	960	672	1,969	-	13,780
13890S09	23,622	23,622	980	686	1,969	-	15,748
13890S10	25,591	25,591	1000	700	1,969	7,874	-
13890S11	27,559	27,559	1030	721	1,969	8,858	-
13890S12	29,528	29,528	1040	728	1,969	9,843	-
13890S13	31,496	31,496	1050	735	1,969	10,827	-
13890S14	33,465	33,465	1045	731	1,969	11,811	-
13890S15	35,433	35,433	1030	721	1,969	12,795	-
13890S16	37,402	37,402	1015	710	1,969	13,780	-
13890S17	39,370	39,370	995	696	1,969	14,764	-
13890S18	41,339	41,339	980	686	1,969	15,748	-
13890S19	43,307	43,307	950	665	1,969	16,732	-
13890S20	45,276	45,276	920	644	1,969	17,717	-
13890S21	47,244	47,244	900	630	1,969	18,701	-

MATERIAL	ITEM NUMBER
STEEL	13890-Sxx
STAINLESS STEEL	13890-Sxx8



The load capacities are based on a 1% deflection test based on a simulation model (Finite Element Analysis)
 Load capacity in practice always depends on mounting use and other external factors that can influence this.
 Tolerance ±0,5mm measured from reference point.

DIMENSIONS ARE CALCULATED FROM METRIC VALUES
THOMAS REGOUT INT. BV. RESERVES THE RIGHT TO
ALTER NON-CUSTOMER SPECIFICATIONS WITHOUT NOTICE

Designer M. Urlings	Gen.Tol.Dim. ± 0.0197	Third angle projection	Material	
Date 18-7-2018	Gen.Tol.Angle ± 0.0197		Treatment	
Approver	Gen.Roughness Ra		Draw type Fabrication	Doc.No. E000147293
Date	Units inch/deg.		Scale 1 : 2	Type

Description
SUPREME TR9036 - (36)

Format A2	THOMAS REGOUT INTERNATIONAL B.V.	Item No. 13890-Sxx	Released for Production
© THOMAS REGOUT INTERNATIONAL BV, Industrieweg 40, 6219 NR, Maastricht, The Netherlands, +31 (0)43 351 66 66		All rights are reserved.	

Rev	Date	Description	Designer
01	13-6-2023	REVISED MODEL AND TABLE.	R.G