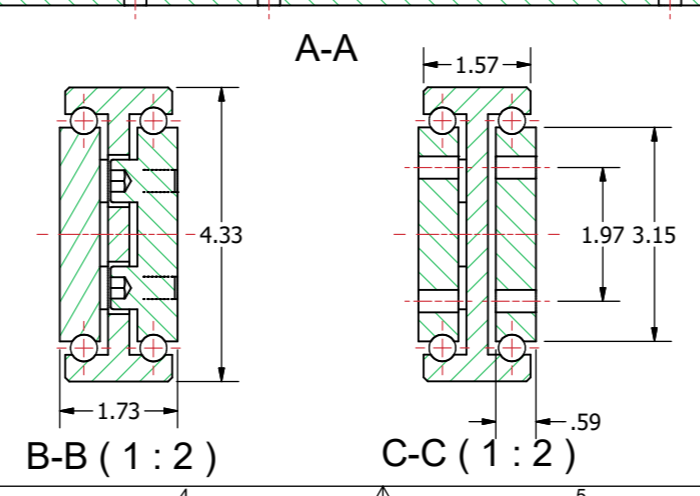
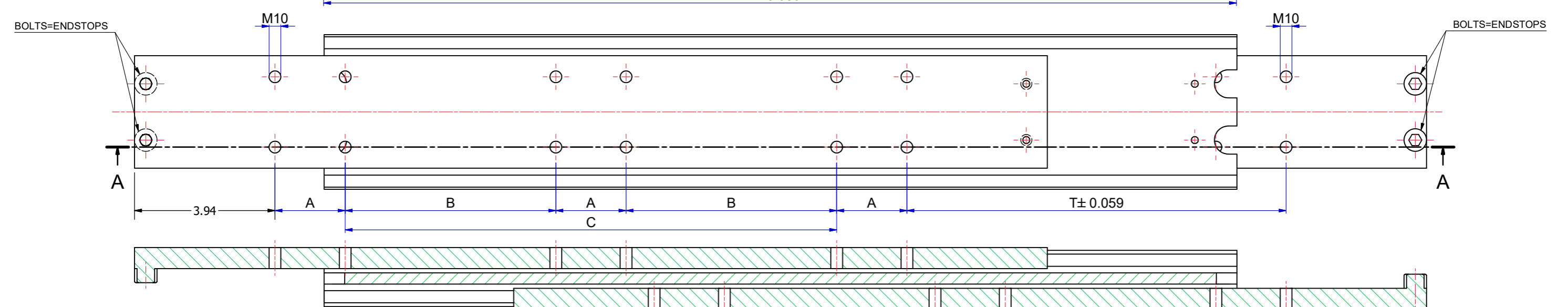
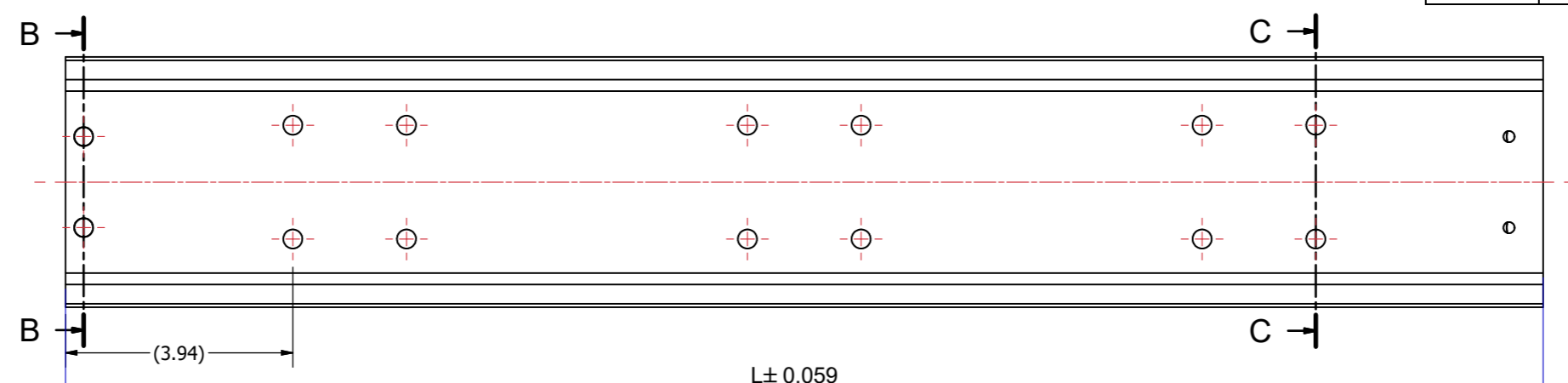


Slide number	Installation length L (inch)	Travel T (inch)	Load per pair (kg) steel	Dimension A	Dimension B	Dimension C
138110S03	11,811	11,811	1430	3,937	-	-
138110S04	13,780	13,780	1485	1,969	-	1,969
138110S05	15,748	15,748	1540	1,969	-	3,937
138110S06	17,717	17,717	1600	1,969	-	5,906
138110S07	19,685	19,685	1650	1,969	-	7,874
138110S08	21,654	21,654	1700	1,969	-	9,843
138110S09	23,622	23,622	1740	1,969	-	11,811
138110S10	25,591	25,591	1780	1,969	5,906	-
138110S11	27,559	27,559	1800	1,969	6,890	-
138110S12	29,528	29,528	1780	1,969	7,874	-
138110S13	31,496	31,496	1760	3,937	5,906	-
138110S14	33,465	33,465	1730	3,937	6,890	-
138110S15	35,433	35,433	1690	3,937	7,874	-
138110S16	37,402	37,402	1660	3,937	8,858	-
138110S17	39,370	39,370	1630	3,937	9,843	-
138110S18	41,339	41,339	1600	3,937	10,827	-
138110S19	43,307	43,307	1560	3,937	11,811	-
138110S20	45,276	45,276	1530	3,937	12,795	-
138110S21	47,244	47,244	1500	3,937	13,780	-



The load capacities are based on a 1% deflection test based on a simulation model (Finite Element Analysis)  
 Load capacity in practice always depends on mounting use and other external factors that can influence this.  
 Tolerance ±0,5mm measured from reference point.

**DIMENSIONS ARE CALCULATED FROM METRIC VALUES**  
**THOMAS REGOUT INT. BV. RESERVES THE RIGHT TO ALTER NON-CUSTOMER SPECIFICATIONS WITHOUT NOTICE**

Designer M.Urlings	Gen.Tol.Dim. ± 0.0197	Third angle projection	Material		
Date 18-7-2018	Gen.Tol.Angle ± 0.0197		Treatment		
Approver	Gen.Roughness Ra		Draw type Fabrication	Doc.No. E000149170	
Date	Units inch/deg.		Scale 1 : 2	Type	Model No.

Description  
**SUPREME TR11044 - (44)**

Format A2		Item No. 138110-Sxx	Released for Production
			Revision 01

© THOMAS REGOUT INTERNATIONAL BV, Industrieweg 40, 6219 NR, Maastricht, The Netherlands, +31 (0)43 351 66 66 All rights are reserved.

Rev	Date	Description	Designer
01	15-6-2023	REVISED MODEL AND TABLE.	R.G