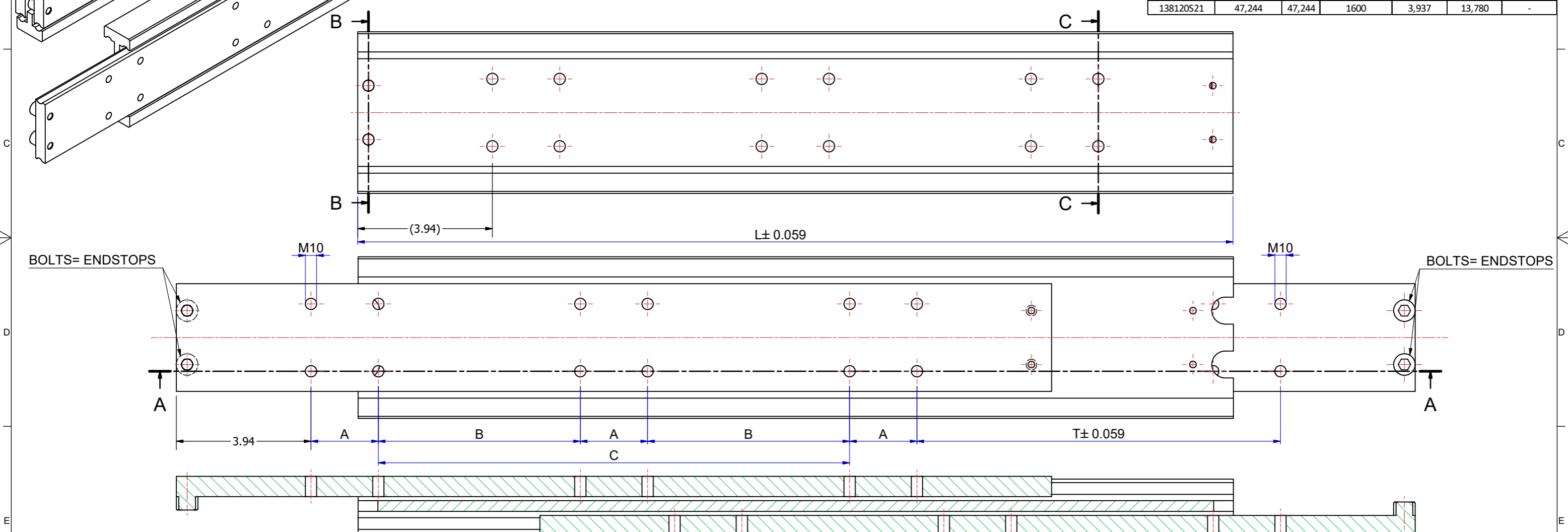


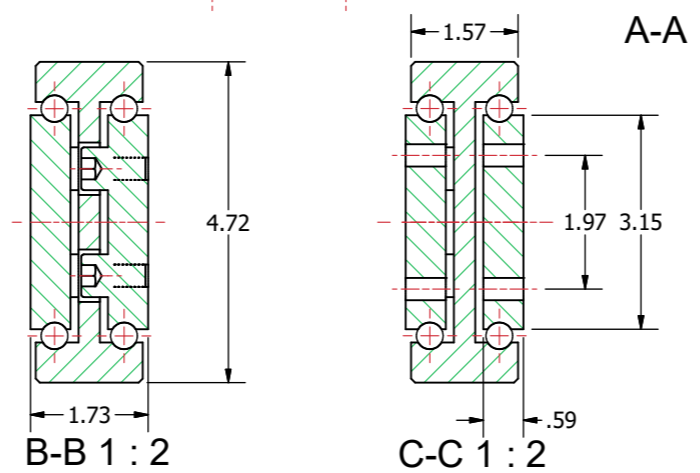
Slide number	Installation length L (inch)	Travel T (inch)	Load per pair (kg) steel	Dimension A	Dimension B	Dimension C
138120S03	11,811	11,811	1480	3,937	-	-
138120S04	13,780	13,780	1560	1,969	-	1,969
138120S05	15,748	15,748	1640	1,969	-	3,937
138120S06	17,717	17,717	1720	1,969	-	5,906
138120S07	19,685	19,685	1760	1,969	-	7,874
138120S08	21,654	21,654	1820	1,969	-	9,843
138120S09	23,622	23,622	1850	1,969	-	11,811
138120S10	25,591	25,591	1870	1,969	5,906	-
138120S11	27,559	27,559	1890	1,969	6,890	-
138120S12	29,528	29,528	1860	1,969	7,874	-
138120S13	31,496	31,496	1840	3,937	5,906	-
138120S14	33,465	33,465	1820	3,937	6,890	-
138120S15	35,433	35,433	1790	3,937	7,874	-
138120S16	37,402	37,402	1760	3,937	8,858	-
138120S17	39,370	39,370	1730	3,937	9,843	-
138120S18	41,339	41,339	1700	3,937	10,827	-
138120S19	43,307	43,307	1660	3,937	11,811	-
138120S20	45,276	45,276	1630	3,937	12,795	-
138120S21	47,244	47,244	1600	3,937	13,780	-



The load capacities are based on a 1% deflection test based on a simulation model (Finite Element Analysis) Load capacity in practice always depends on mounting use and other external factors that can influence this. Tolerance $\pm 0,5\text{mm}$ measured from reference point.

DIMENSIONS ARE CALCULATED FROM METRIC VALUES
THOMAS REGOUT INT. BV. RESERVES THE RIGHT TO
ALTER NON-CUSTOMER SPECIFICATIONS WITHOUT NOTICE

Designer M.Urlings	Gen.Tol.Dim. ± 0.0197	Third angle projection	Material	
Date 19-7-2018	Gen.Tol.Angle ± 0.0197		Treatment	
Approver	Gen.Roughness Ra		Draw type Fabrication	Doc.No. E000149178
Date	Units inch/deg.		Scale 1 : 2	Type
Description SUPREME TR12044 - (44)				
Format A2			Item No. 138120-Sxx	Released for Production
© THOMAS REGOUT INTERNATIONAL BV, Industrieweg 40, 6219 NR, Maastricht, The Netherlands, +31 (0)43 351 66 66 All rights are reserved.				



Rev	Date	Description	Designer
01	15-6-2023	REVISED MODEL AND TABLE.	R.G