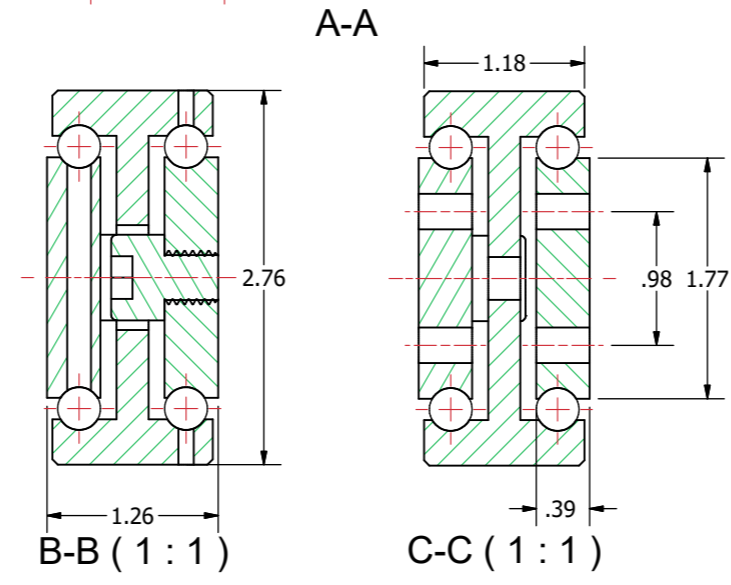
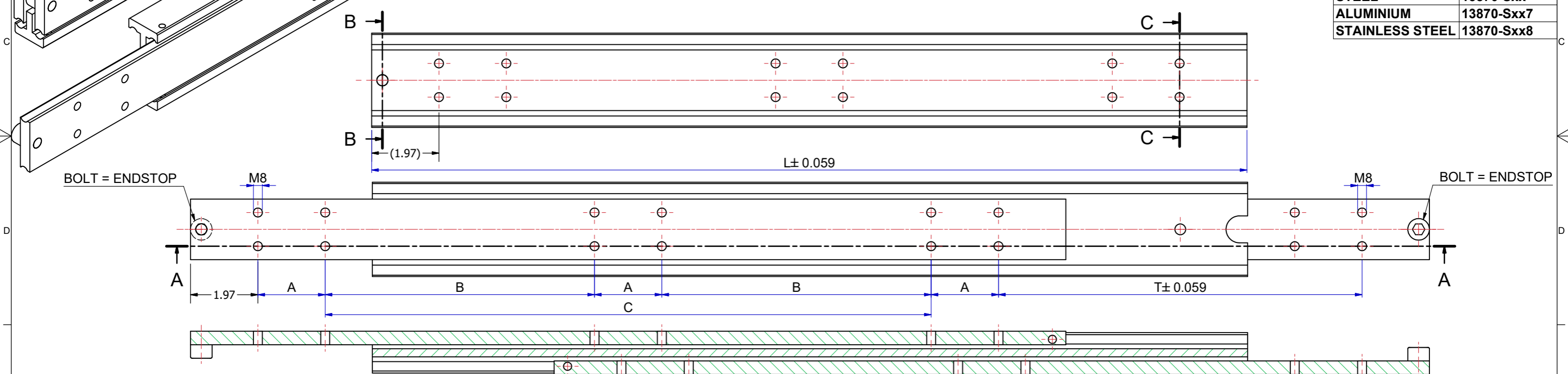


Slide number	Installation length L (inch)	Travel T (inch)	Load per pair (kg) steel	Load per pair (kg) aluminum	Load per pair (kg) stainless steel	Dimension A	Dimension B	Dimension C
13870S01	7,874	7,874	540	240	420	1,969	-	-
13870S02	9,843	9,843	560	250	430	1,969	-	1,969
13870S03	11,811	11,811	580	260	440	1,969	-	3,937
13870S04	13,780	13,780	600	270	450	1,969	-	5,906
13870S05	15,748	15,748	620	280	460	1,969	-	7,874
13870S06	17,717	17,717	640	290	470	1,969	-	9,843
13870S07	19,685	19,685	650	300	480	1,969	-	11,811
13870S08	21,654	21,654	660	315	490	1,969	-	13,780
13870S09	23,622	23,622	670	330	500	1,969	-	15,748
13870S10	25,591	25,591	680	320	510	1,969	7,874	-
13870S11	27,559	27,559	690	310	520	1,969	8,858	-
13870S12	29,528	29,528	695	300	530	1,969	9,843	-
13870S13	31,496	31,496	700	290	540	1,969	10,827	-
13870S14	33,465	33,465	695	280	526	1,969	11,811	-
13870S15	35,433	35,433	690	270	512	1,969	12,795	-
13870S16	37,402	37,402	685	260	490	1,969	13,780	-
13870S17	39,370	39,370	680	250	476	1,969	14,764	-
13870S18	41,339	41,339	660	240	462	1,969	15,748	-
13870S19	43,307	43,307	650	230	455	1,969	16,732	-
13870S20	45,276	45,276	630	220	441	1,969	17,717	-
13870S21	47,244	47,244	610	210	427	1,969	18,701	-

MATERIAL	ITEM NUMBER
STEEL	13870-Sxx
ALUMINIUM	13870-Sxx7
STAINLESS STEEL	13870-Sxx8



The load capacities are based on a 1% deflection test based on a simulation model (Finite Element Analysis)
 Load capacity in practice always depends on mounting use and other external factors that can influence this.
 Tolerance ±0,5mm measured from reference point.

DIMENSIONS ARE CALCULATED FROM METRIC VALUES
THOMAS REGOUT INT. BV. RESERVES THE RIGHT TO
ALTER NON-CUSTOMER SPECIFICATIONS WITHOUT NOTICE

Designer M.Urlings	Gen.Tol.Dim. ± 0.0197	Third angle projection	Material	
Date 18-7-2018	Gen.Tol.Angle ± 0.0197		Treatment	
Approver	Gen.Roughness Ra		Draw type Fabrication	Doc.No. E000149134
Date	Units inch/deg.		Scale 1 : 2	Type

Description
SUPREME TR7032 - (32)

Format A2	THOMAS REGOUT INTERNATIONAL B.V.	Item No. 13870-Sxx	Released for Production	Revision 01
-----------	---	--------------------	-------------------------	-------------

© THOMAS REGOUT INTERNATIONAL BV, Industrieweg 40, 6219 NR, Maastricht, The Netherlands, +31 (0)43 351 66 66 All rights are reserved.

Rev	Date	Description	Designer
01	12-6-2023	REVISED MODEL AND TABLE.	R.G