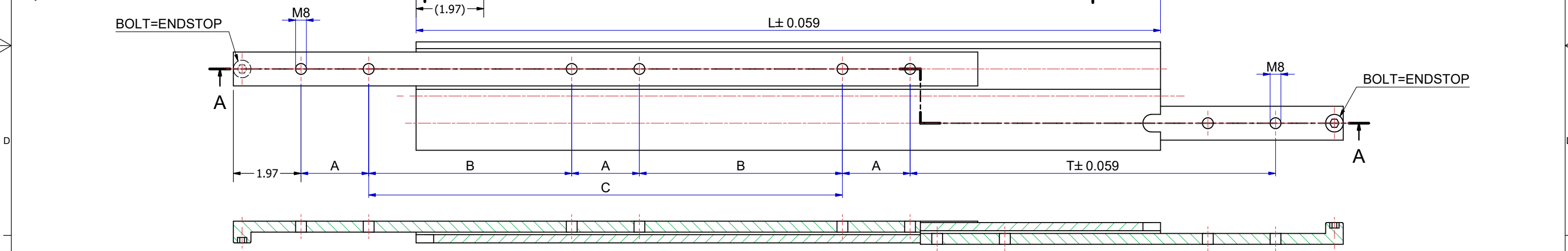
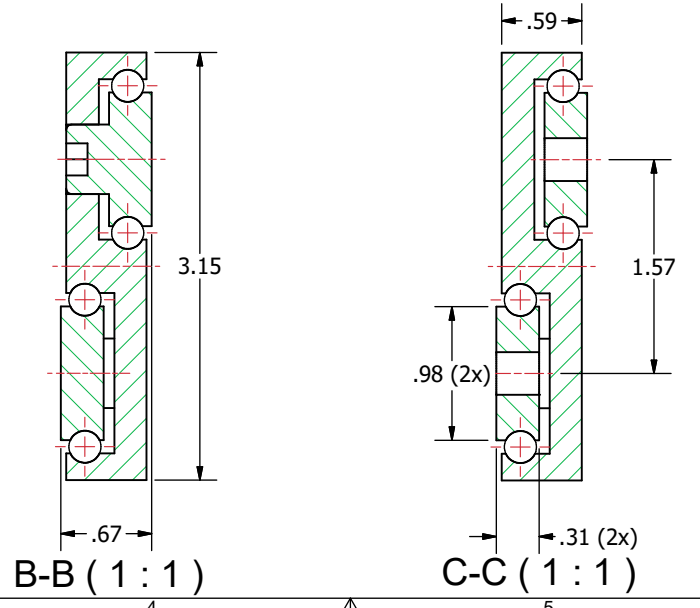


Slide number	Installation length L (inch)	Travel T (inch)	Load per pair (kg) steel	Dimension A	Dimension B	Dimension C
13880579	7,874	7,874	170	1,969	-	-
13880580	9,843	9,843	190	1,969	-	1,969
13880581	11,811	11,811	220	1,969	-	3,937
13880582	13,780	13,780	240	1,969	-	5,906
13880583	15,748	15,748	260	1,969	-	7,874
13880584	17,717	17,717	280	1,969	-	9,843
13880585	19,685	19,685	290	1,969	-	11,811
13880586	21,654	21,654	300	1,969	5,906	-
13880587	23,622	23,622	285	1,969	6,890	-
13880588	25,591	25,591	270	1,969	7,874	-
13880589	27,559	27,559	260	1,969	8,858	-
13880590	29,528	29,528	250	1,969	9,843	-
13880591	31,496	31,496	240	1,969	10,827	-
13880592	33,465	33,465	230	1,969	11,811	-
13880593	35,433	35,433	220	1,969	12,795	-
13880594	37,402	37,402	210	1,969	13,780	-
13880595	39,370	39,370	200	1,969	14,764	-
13880596	41,339	41,339	190	1,969	15,748	-
13880597	43,307	43,307	180	1,969	16,732	-
13880598	45,276	45,276	170	1,969	17,717	-
13880599	47,244	47,244	160	1,969	18,701	-



A-A



The load capacities are based on a 1% deflection test based on a simulation model (Finite Element Analysis)  
 Load capacity in practice always depends on mounting use and other external factors that can influence this.  
 Tolerance ± 0,5mm measured from reference point.

**DIMENSIONS ARE CALCULATED FROM METRIC VALUES**  
**THOMAS REGOUT INT. BV. RESERVES THE RIGHT TO ALTER NON-CUSTOMER SPECIFICATIONS WITHOUT NOTICE**

Designer M.Urlings	Gen.Tol.Dim. ± 0.0197	Third angle projection	Material		
Date 19-7-2018	Gen.Tol.Angle ± 0.0197		Treatment		
Approver	Gen.Roughness Ra		Draw type Fabrication	Doc.No. E000149254	
Date	Units inch/deg.		Scale 1 : 2	Type	Model No.

Description  
**SUPREME TR8017 - (17)**

Format A2		Item No. 13880579 ~ S99	Released for Production
		Revision 01	

© THOMAS REGOUT INTERNATIONAL BV, Industrieweg 40, 6219 NR, Maastricht, The Netherlands, +31 (0)43 351 66 66 All rights are reserved.

Rev	Date	Description	Designer
01	20-6-2023	REVISED MODEL AND TABLE.	R.G