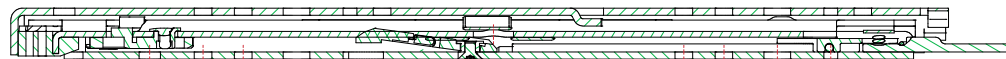
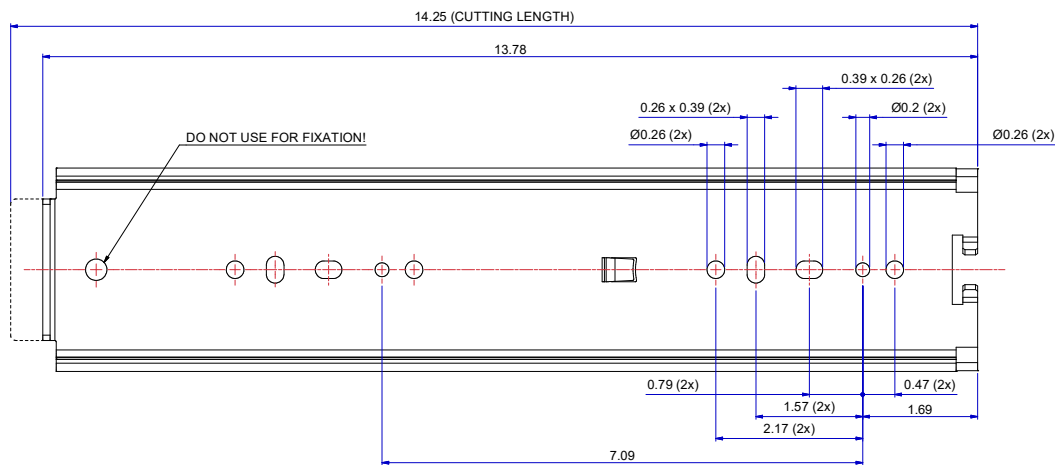
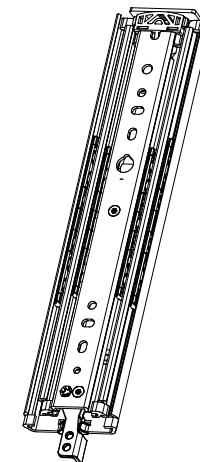
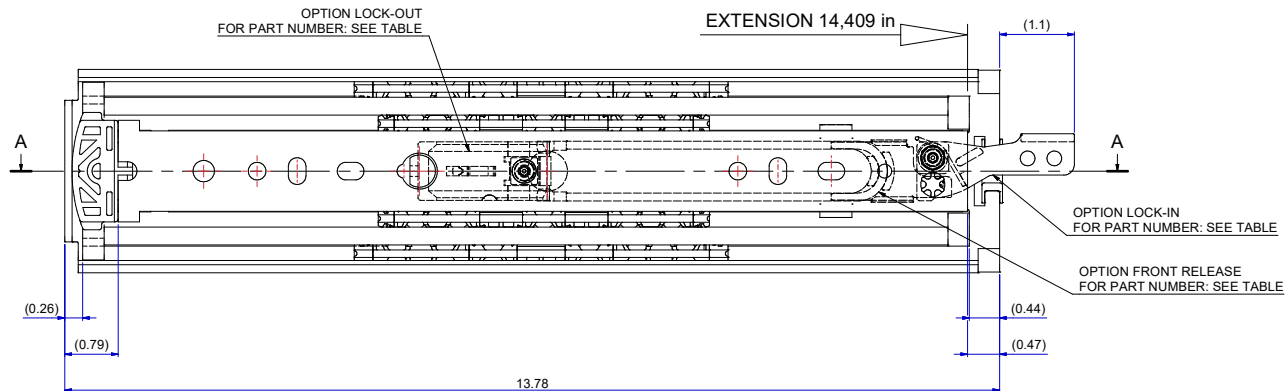
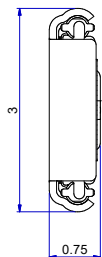


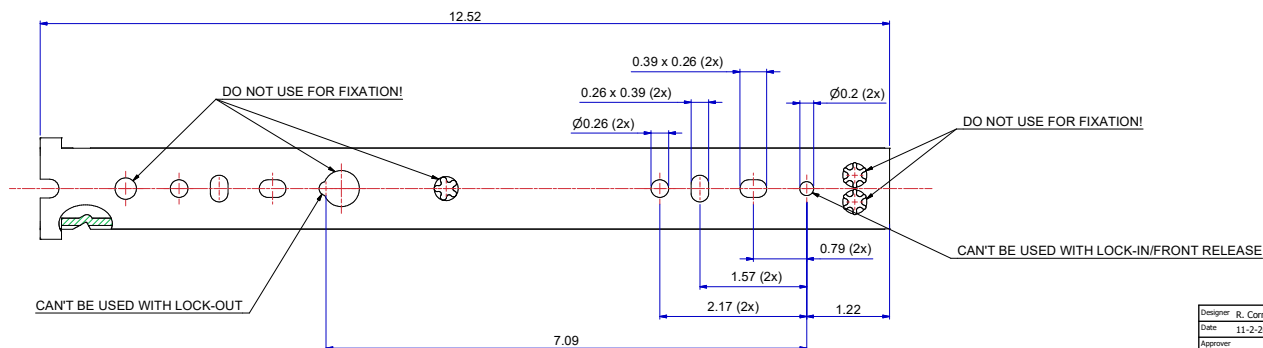
T 1-2 = 7,374 in
T 2-3 = 7,035 in



A-A (1:1)



511-14-S32-TC1



513-14-S32-TC3

SLIDE
RIGHT HAND = LEFT HAND
LOCK-IN/FRONT-RELEASE
RIGHT HAND SIDE SHOWN, LEFT HAND SIDE IS MIRRORED

DIMENSIONS ARE CALCULATED FROM METRIC VALUES.
DIMENSIONS BETWEEN MARKS ARE GUIDE DIMENSIONS.
THOMAS REGOUT INT. B.V. RESERVES THE RIGHT TO ALTER
NON-CUSTOMER SPECIFIC SPECIFICATIONS WITHOUT NOTICE.

Designer	R. Cornelisse	Gen.Tol.Dim.	± 0.5	Third angle projection	Material
Date	11-2-2021	Gen.Tol.Angle	± 0.5		Treatment
Approver		Gen.Roughness	Ra		Draw type
Date		Units	mm/deg.	Scale	1 : 1
Description				Type	Model No.
TR7619 350 / 366 (19,1mm)					E000115788
Released for Production					E000012303

Format	A1	THOMAS REGOUT INTERNATIONAL B.V.	Item No.	114-S32	Revision	00
--------	----	----------------------------------	----------	---------	----------	----

STANDARD	114S32	LOCK-IN	114S32A	LOCK-OUT	114S32B	LOCK-IN & LOCK-OUT & FRONT-RELEASE	114S32C
PART NUMBER	114S32						