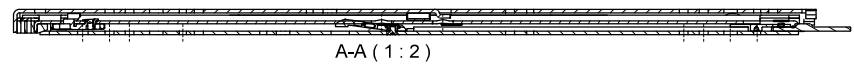
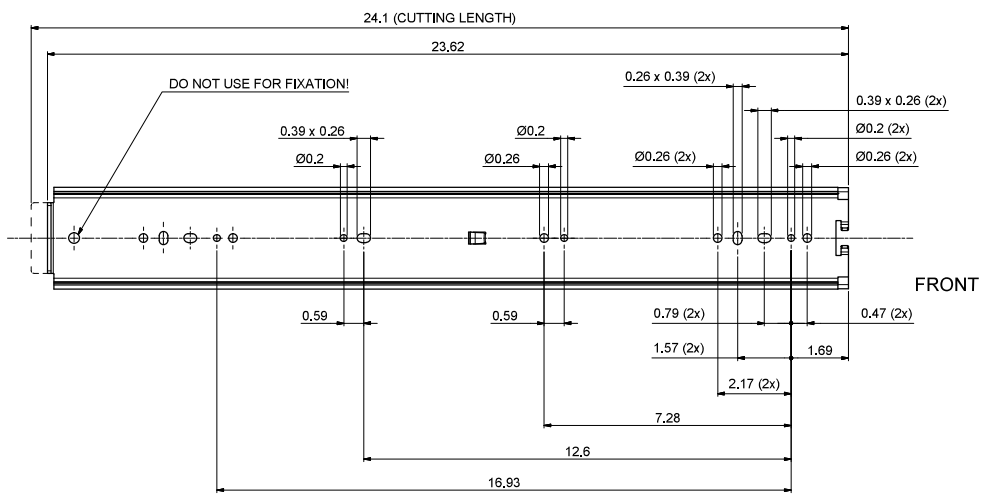
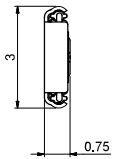
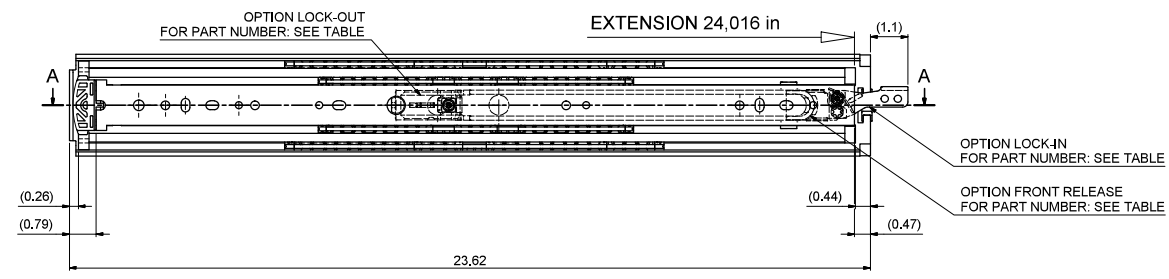


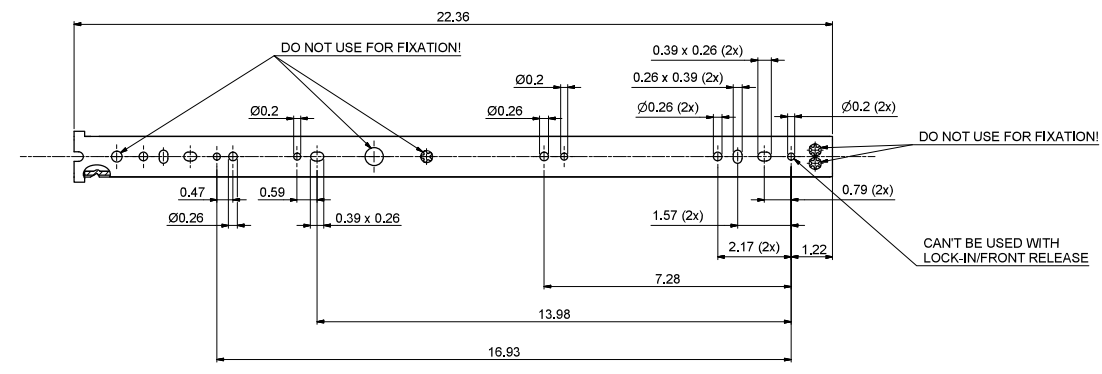
T 1-2 = 11,547 in
T 2-3 = 12,469 in



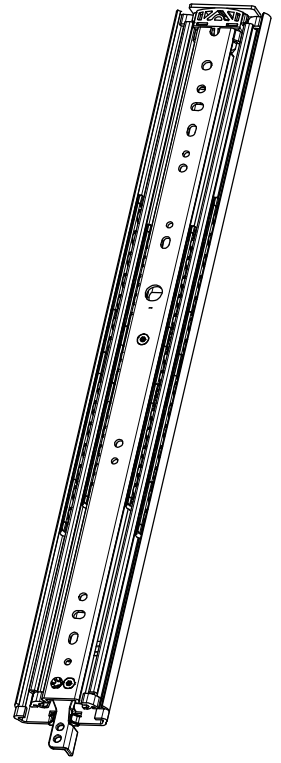
A-A (1:2)



511-14-S37-TC1



513-14-S37-TC3



SLIDE
RIGHT HAND = LEFT HAND
LOCK-IN/FRONT-RELEASE
RIGHT HAND SIDE SHOWN, LEFT HAND SIDE IS MIRRORED

DIMENSIONS ARE CALCULATED FROM METRIC VALUES.
DIMENSIONS BETWEEN MARKS ARE GUIDE DIMENSIONS.
THOMAS REGOUT INT. B.V. RESERVES THE RIGHT TO ALTER
NON-CUSTOMER SPECIFIC SPECIFICATIONS WITHOUT NOTICE.

Designer	R. Cornelisse	Gen.Tel.Dim.	± 0,5	Third angle projection	Material
Date	11-2-2021	Gen.Tel.Angle	± 0,5		Treatment
Approver		Gen.Roughness	Ra	Chav type	Fabrication
Date		Units	mm/deg.	Scale	1 : 2
Description		TR7619 600 / 610 (19,1mm)		Type	Model No. E000012303
Format	A1	STANDARD	114S37	LOCK-IN & LOCK-OUT & FRONT-RELEASE	114S37A
Part Number	114S37	LOCK-IN	114S37A	LOCK-OUT	114S37B
Item No.		114-S37		Revision	
				00	

Released for Production

© THOMAS REGOUT INTERNATIONAL B.V. Industrieweg 40, 6219 NR, Maastricht, The Netherlands, +31 (0)43 351 66 66 All rights are reserved.