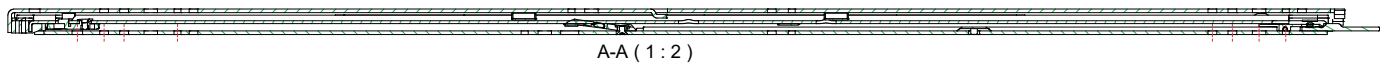
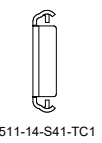
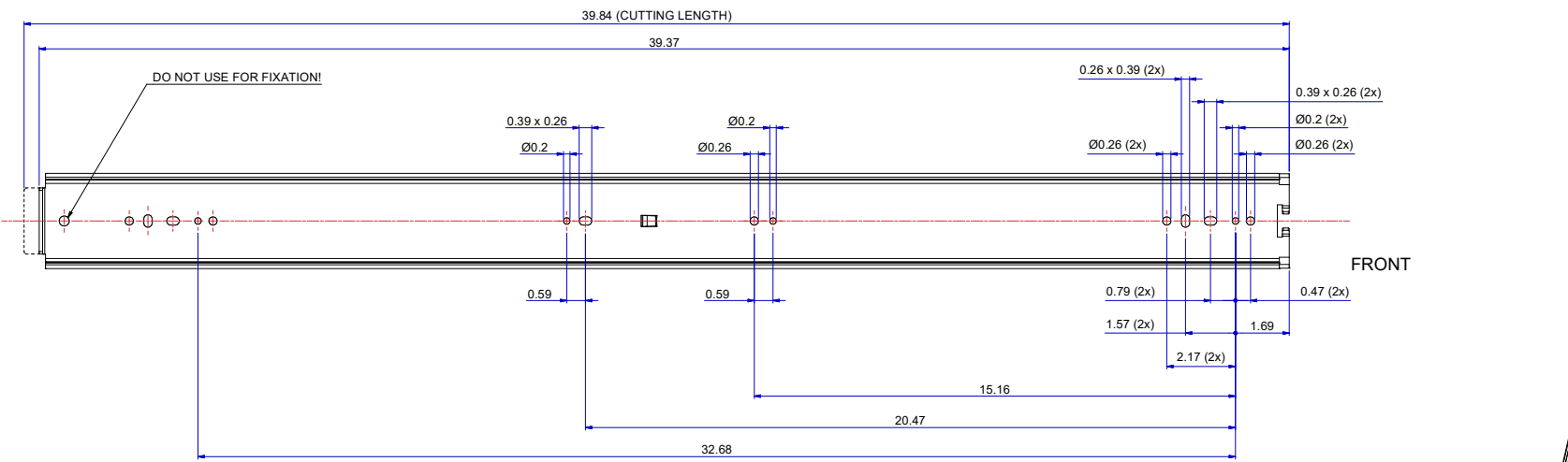
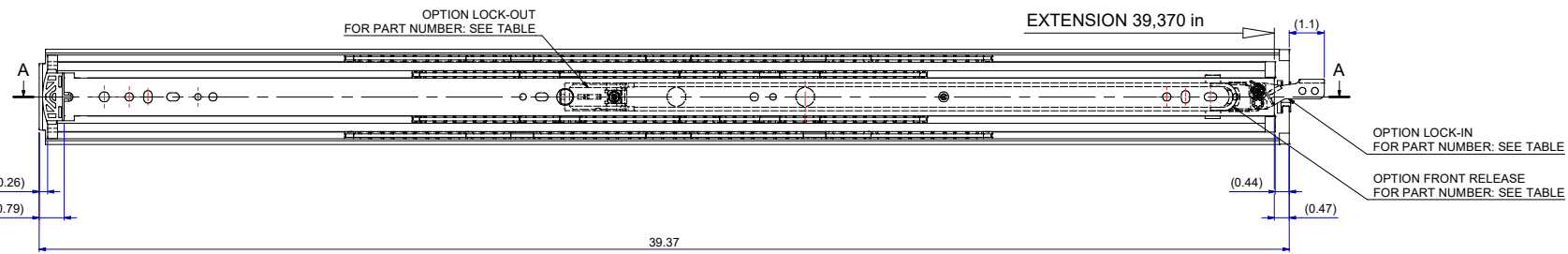
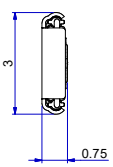


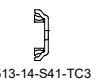
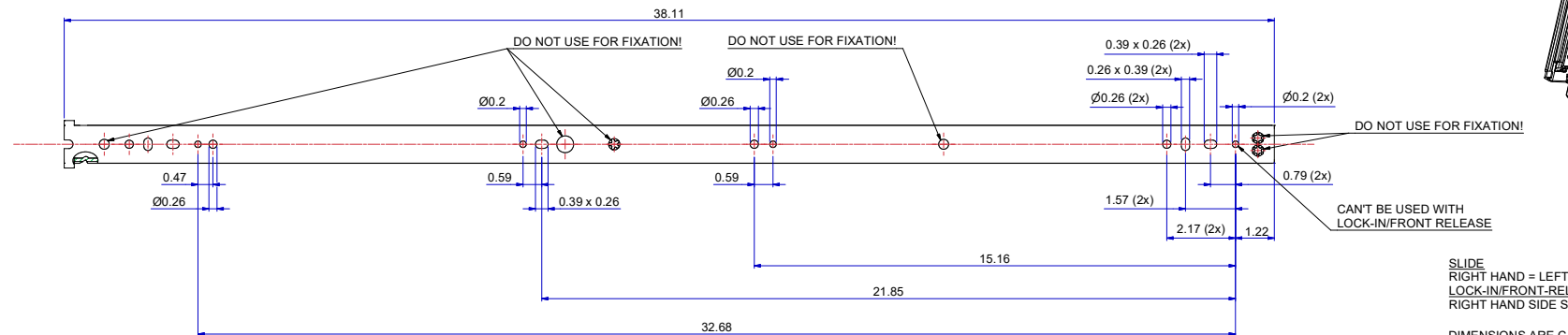
T 1-2 = 18,083 in
T 2-3 = 21,287 in



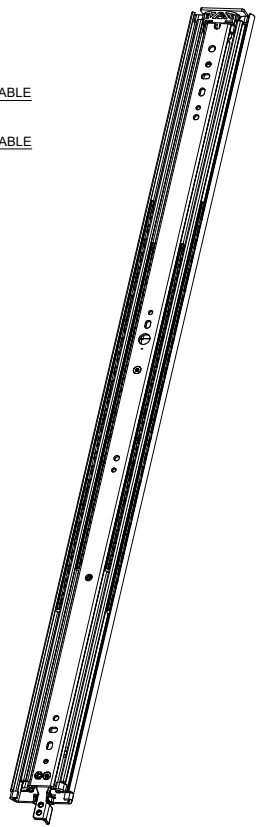
A-A (1:2)



511-14-S41-TC1



513-14-S41-TC3



SLIDE
RIGHT HAND = LEFT HAND
LOCK-IN/FRONT-RELEASE
RIGHT HAND SIDE SHOWN, LEFT HAND SIDE IS MIRRORED

DIMENSIONS ARE CALCULATED FROM METRIC VALUES.
DIMENSIONS BETWEEN MARKS ARE GUIDE DIMENSIONS.
THOMAS REGOUT INT. B.V. RESERVES THE RIGHT TO ALTER
NON-CUSTOMER SPECIFIC SPECIFICATIONS WITHOUT NOTICE.

Designer	R. Cornelisse	Gen.Tol.Dim.	± 0.5	Third angle projection	Material
Date	11-2-2021	Gen.Tol.Angle	± 0.5	Treatment	
Approver		Gen.Roughness	Ra	Draw type	Fabrication
Date		Units	mm/deg.	Scale	1 : 2
Description				Type	Model No. E000012303

TR7619 1000 / 1000 (19,1mm)

Format	A1	THOMAS REGOUT INTERNATIONAL B.V.	Item No.	114-S41	Revision	00
--------	----	----------------------------------	----------	---------	----------	----

PART NUMBER	STANDARD	LOCK-IN	LOCK-OUT	LOCK-IN & LOCK-OUT & FRONT-RELEASE
	114S41	114S41A	114S41B	114S41D