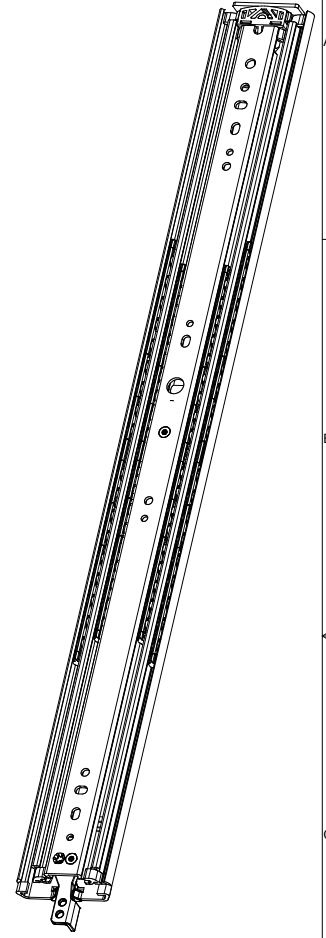
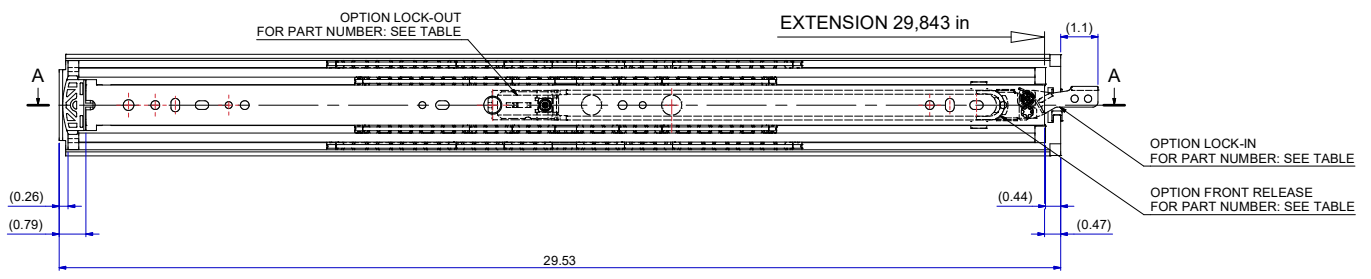
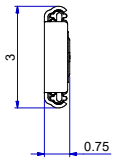
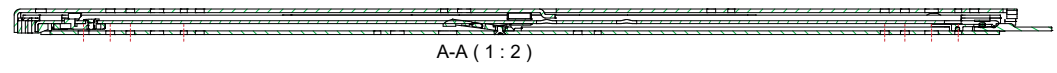
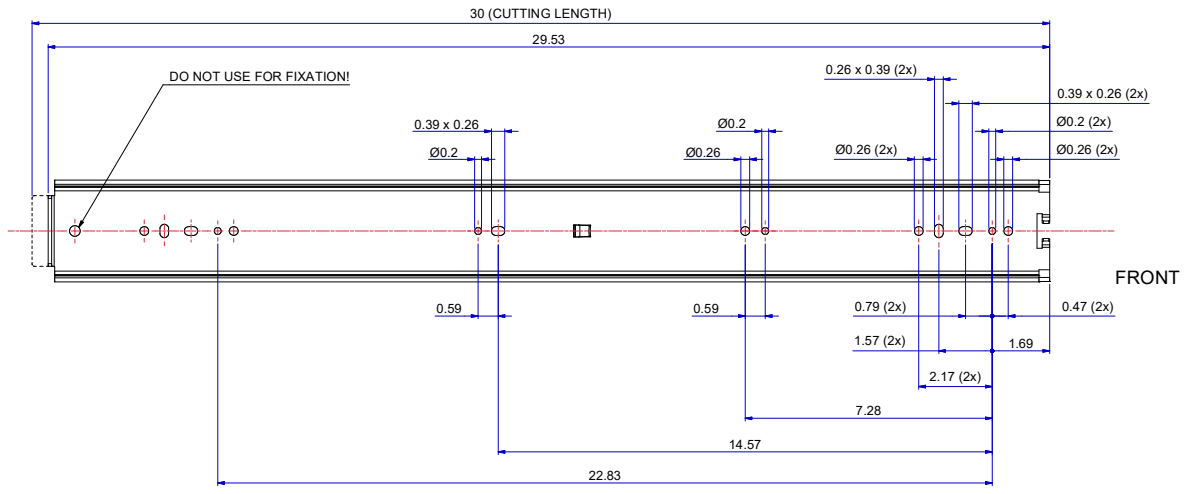


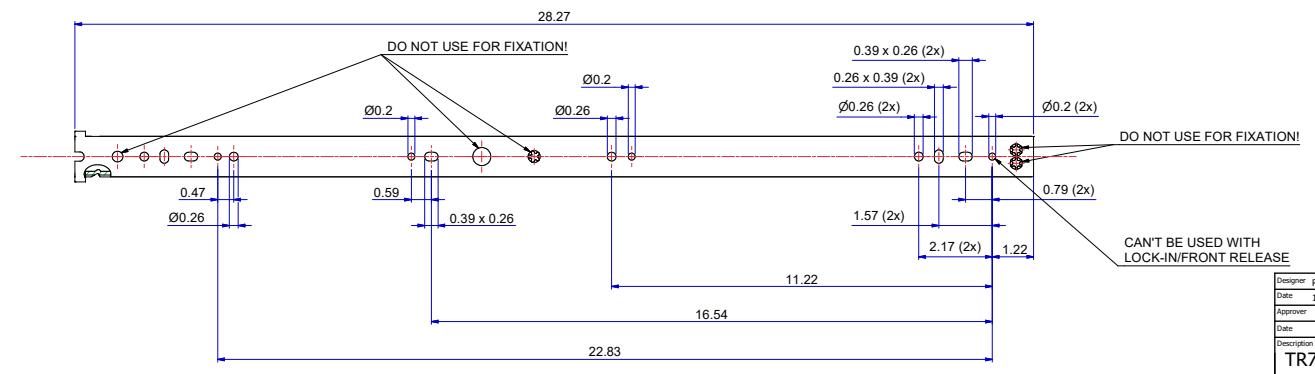
T 1-2 = 14,618 in  
T 2-3 = 15,224 in



511-14-S47-TC1



513-14-S47-TC3



SLIDE  
RIGHT HAND = LEFT HAND  
LOCK-IN/FRONT-RELEASE  
RIGHT HAND SIDE SHOWN, LEFT HAND SIDE IS MIRROR

DIMENSIONS ARE CALCULATED FROM METRIC VALUES.  
DIMENSIONS BETWEEN MARKS ARE GUIDE DIMENSIONS.  
THOMAS REGOUT INT. B.V. RESERVES THE RIGHT TO ALTER  
NON-CUSTOMER SPECIFIC SPECIFICATIONS WITHOUT NOTICE.

Designer	R. Cornelisse	Gen.Tol.Dim.	± 0.5	Third angle projection	Material
Date	11-2-2021	Gen.Tol.Angle	± 0.5		Treatment
Approver		Gen.Roughness	Ra		Draw type
Date		Units	mm/deg.		Fabrication
				Scale	1 : 2
				Type	
				Model No.	E000117079
				Model No.	E000012303

Description  
**TR7619 750 / 758 (19,1mm)**

Format	A1	THOMAS REGOUT INTERNATIONAL B.V.	Item No.	114-S47	Revision	00
--------	----	----------------------------------	----------	---------	----------	----

STANDARD	LOCK-IN	LOCK-OUT	LOCK-IN & LOCK-OUT & FRONT-RELEASE
114S47	114S47A	114S47B	114S47D